

## IGFBP2 monoclonal antibody

Catalog: MB63628

Host: Mouse

Reactivity: Human, Mouse, Rat

**BackGround:****Product:**

PBS (PH 7.3) containing 1% BSA, 50% glycerol and 0.02% sodium azide.

**Molecular Weight:**

34.8 kDa(Predicted)

**Swiss-Prot:**

P18065

**Purification&Purity:**

Purified from mouse ascites fluids or tissue culture supernatant by affinity chromatography (protein A/G)

**Applications:**

WB 1:1000, FLOW 1:100

**Storage&Stability:**

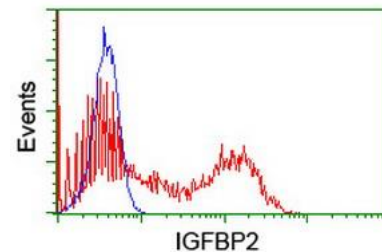
PBS (PH 7.3) containing 1% BSA, 50% glycerol and 0.02% sodium azide.

**Specificity:**

insulin like growth factor binding protein 2

**DATA:**

Western blot analysis of extracts (10ug) from 1 cell line by using anti-IGFBP2 monoclonal antibody (1:200).

**Note:**

For research use only, not for use in diagnostic procedure.

**Bioworld Technology, Inc.**

Add: 1660 South Highway 100, Suite 500 St. Louis Park, MN 55416, USA.

Email: [info@bioworld.com](mailto:info@bioworld.com)

Tel: 6123263284

Fax: 6122933841

**Bioworld technology, co. Ltd.**

Add: No 9, weidi road Qixia District Nanjing, 210046, P. R. China.

Email: [info@biogot.com](mailto:info@biogot.com)

Tel: 0086-025-68037686

Fax: 0086-025-68035151