

IGF2BP2 monoclonal antibody

Catalog: MB63625

Host: Mouse

Reactivity: Human, Monkey, Mouse, Rat

BackGround:

This gene encodes a member of the IGF-II mRNA-binding protein (IMP) family. The protein encoded by this gene contains several four KH domains and two RRM domains. It functions by binding to the 5' UTR of the insulin-like growth factor 2 (IGF2) mRNA and regulating IGF2 translation. Alternate transcriptional splice variants, encoding different isoforms, have been characterized. [provided by RefSeq]

Product:

PBS (PH 7.3) containing 1% BSA, 50% glycerol and 0.02% sodium azide.

Molecular Weight:

65.9 kDa(Predicted)

Swiss-Prot:

Q9Y6M1

Purification&Purity:

Purified from mouse ascites fluids or tissue culture supernatant by affinity chromatography (protein A/G)

Applications:

WB 1:500~2000, IF 1:100

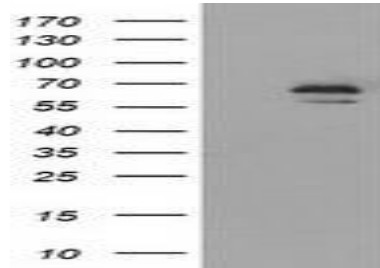
Storage&Stability:

PBS (PH 7.3) containing 1% BSA, 50% glycerol and 0.02% sodium azide.

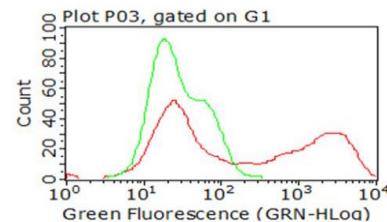
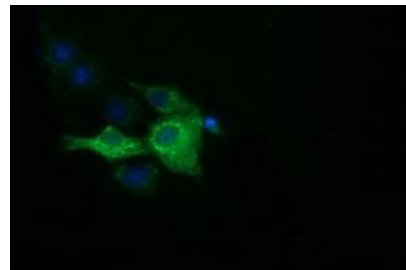
Specificity:

insulin like growth factor 2 mRNA binding protein 2

DATA:



Western blot analysis of extracts (35ug) from 9 different cell lines by using anti-IGF2BP2 monoclonal antibody.



Note:

For research use only, not for use in diagnostic procedure.

Bioworld Technology, Inc.

Add: 1660 South Highway 100, Suite 500 St. Louis Park, MN 55416, USA.

Email: info@bioworld.com

Tel: 6123263284

Fax: 6122933841

Bioworld technology, co. Ltd.

Add: No 9, weidi road Qixia District Nanjing, 210046, P. R. China.

Email: info@biogot.com

Tel: 0086-025-68037686

Fax: 0086-025-68035151