

## VSV-G-Tag Mouse monoclonal antibody

Catalog: MB2021

Host: Mouse

Reactivity: All

### BackGround:

Epitope tagging is a widely accepted technique that involves the fusion of an epitope labeled peptide to a certain protein as a marker for gene expression. This technique allows gene expression to be easily monitored during western blotting, immunoprecipitation and immunofluorescence by using an antibody that recognizes such an epitope. Amino acid sequences that are widely used for epitope tagging are as follows; YPYDVPDYA (HA-Tag), EQKLISEEDL (Myc-Tag) and YTDIEMNRLGK (VSV-G-Tag), which correspond to the partial peptide of Influenza hemagglutinin protein, human c-myc gene product, and Vesicular stomatitis virus glycoprotein, respectively.

### Product:

Mouse IgG1, 1mg/ml in PBS with 0.02% sodium azide, 50% glycerol, pH7.2

### Molecular Weight:

N/A

### Swiss-Prot:

N/A

### Purification&Purity:

Affinity-chromatography

### Applications:

WB: 1:5000~1:10000

IF: 1:200

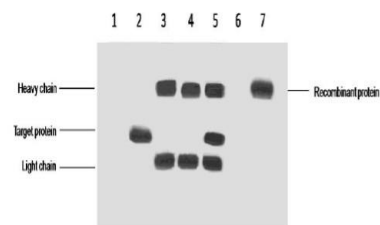
### Storage&Stability:

Store at 4 °C short term. Aliquot and store at -20 °C long term. Avoid freeze-thaw cycles.

### Specificity:

VSV-G-tag mouse monoclonal antibody detects endogenous levels of internal, C-terminal, and N-terminal VSV-G- tagged proteins.

### DATA:



IP antibody use: 5ug VSV-G Mouse IgG1 per ml Lysate, WB 1:5000

1. untransfected 293 cell lysate

2. transfected 293 cell lysate with VSV-G-tag fusion protein

3. IP (untransfected 293 + anti-VSV-G mAb + Protein G agarose)

4. IP (transfected 293 + normal Mouse IgG + Pr)

### Note:

For research use only, not for use in diagnostic procedure.

### Bioworld Technology, Inc.

Add: 1660 South Highway 100, Suite 500 St. Louis Park, MN 55416, USA.

Email: [info@bioworld.com](mailto:info@bioworld.com)

Tel: 6123263284

Fax: 6122933841

### Bioworld technology, co. Ltd.

Add: No 9, weidi road Qixia District Nanjing, 210046, P. R. China.

Email: [info@biogot.com](mailto:info@biogot.com)

Tel: 0086-025-68037686

Fax: 0086-025-68035151