

Angiotensin Converting Enzyme 1 monoclonal antibody

Catalog: MB10541

Host: Rabbit

Reactivity: Mouse, Rat

BackGround:

Converts angiotensin I to angiotensin II by release of the terminal His-Leu, this results in an increase of the vaso-constrictor activity of angiotensin. Also able to inactivate bradykinin, a potent vasodilator. Has also a glycosidase activity which releases GPI-anchored proteins from the membrane by cleaving the mannose linkage in the GPI moiety. This GPIase activity seems to be crucial for the egg-binding ability of the sperm.

Product:

50mM Tris-Glycine(pH 7.4), 0.15M NaCl, 40% Glycerol, 0.01% Sodium azide and 0.05% BSA

Molecular Weight:

Calculated MW: 151 kDa; Observed MW: 180 kDa

Swiss-Prot:

P09470

Purification&Purity:

Affinity Purified

Applications:

WB: 1/500-1/1000 IHC: 1/50-1/100

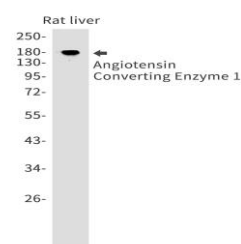
Storage&Stability:

Store at 4 °C short term. Aliquot and store at -20 °C long term. Avoid freeze-thaw cycles.

Isotype:

IgG

DATA:



Western blot analysis of Angiotensin Converting Enzyme 1 in rat liver lysates using Angiotensin Converting Enzyme 1 antibody.

Western blot analysis of Angiotensin Converting Enzyme 1 in mouse liver, mouse heart lysates using Angiotensin Converting Enzyme 1 antibody.

Note:

For research use only, not for use in diagnostic procedure.

Bioworld Technology, Inc.

Add: 1660 South Highway 100, Suite 500 St. Louis Park, MN 55416, USA.

Email: info@bioworld.com

Tel: 6123263284

Fax: 6122933841

Bioworld technology, co. Ltd.

Add: No 9, weidi road Qixia District Nanjing, 210046, P. R. China.

Email: info@biogol.com

Tel: 0086-025-68037686

Fax: 0086-025-68035151