

Phospho-PKC alpha (Thr638) monoclonal antibody

Catalog: MB10425

Host: Rabbit

Reactivity: Human, Mouse, Rat

BackGround:

PKC alpha is an AGC kinase of the PKC family. A classical PKC downstream of many mitogenic and receptors. Classical PKCs are calcium-dependent enzymes that are activated by phosphatidylserine, diacylglycerol and phorbol esters.

Product:

50mM Tris-Glycine(pH 7.4), 0.15M NaCl, 40% Glycerol, 0.01% Sodium azide and 0.05% BSA

Molecular Weight:

Calculated MW: 77 kDa; Observed MW: 80 kDa

Swiss-Prot:

P17252

Purification&Purity:

Affinity Purified

Applications:

WB: 1/500-1/1000 IHC: 1/50-1/100 IP: 1/20

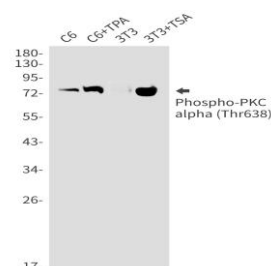
Storage&Stability:

Store at 4 °C short term. Aliquot and store at -20 °C long term. Avoid freeze-thaw cycles.

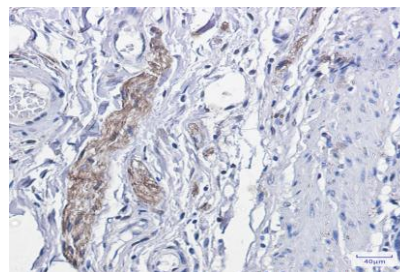
Isotype:

IgG

DATA:



Western blot analysis of Phospho-PKC alpha in C6, C6+TPA, 3T3, 3T3+TSA lysates using Phospho-PKC alpha antibody.



Western blot analysis of Phospho-PKC alpha in K562, C6 lysates using Phospho-PKC alpha antibody.

Immunohistochemistry analysis of paraffin-embedded Human colon cancer using Phospho-PKC alpha antibody. High-pressure and temperature Sodium Citrate pH 6.0 was used for antigen retrieval.

Note:

For research use only, not for use in diagnostic procedure.

Bioworld Technology, Inc.

Add: 1660 South Highway 100, Suite 500 St. Louis Park, MN 55416, USA.

Email: info@bioworld.com

Tel: 6123263284

Fax: 6122933841

Bioworld technology, co. Ltd.

Add: No 9, weidi road Qixia District Nanjing, 210046, P. R. China.

Email: info@biogot.com

Tel: 0086-025-68037686

Fax: 0086-025-68035151