

## CBX3 (5G10) monoclonal antibody

Catalog: MB0191

Host: Mouse

Reactivity: Human, Mouse, Rat, Monkey

### BackGround:

At the nuclear envelope, the nuclear lamina and heterochromatin are adjacent to the inner nuclear membrane. The protein encoded by this gene binds DNA and is a component of heterochromatin. This protein also can bind lamin B receptor, an integral membrane protein found in the inner nuclear membrane. The dual binding functions of the encoded protein may explain the association of heterochromatin with the inner nuclear membrane. This protein binds histone H3 tails methylated at Lys-9 sites. This protein is also recruited to sites of ultraviolet-induced DNA damage and double-strand breaks. Two transcript variants encoding the same protein but differing in the 5' UTR, have been found for this gene.

### Product:

1mg/ml in PBS with 0.02% sodium azide, 50% glycerol, pH7.2

### Molecular Weight:

Predicted band size: 22KDa

Observed band size: 22KDa

### Swiss-Prot:

Q13185

### Purification&Purity:

The antibody was affinity-purified from mouse ascites by affinity-chromatography using epitope-specific immunogen and the purity is > 95% (by SDS-PAGE).

### Applications:

WB: 1:1000 IP: 1:50~200

ICC: 1:200 IHC: 1:800

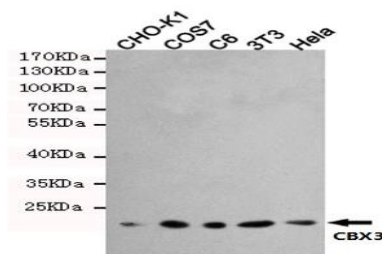
### Storage&Stability:

Store at 4 °C short term. Aliquot and store at -20 °C long term. Avoid freeze-thaw cycles.

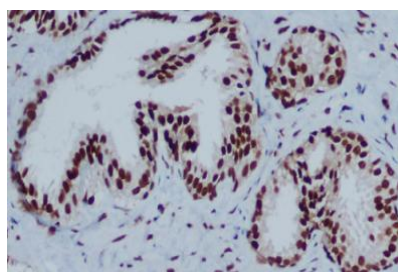
### Specificity:

This antibody detects endogenous levels of CBX3 and does not cross-react with related proteins.

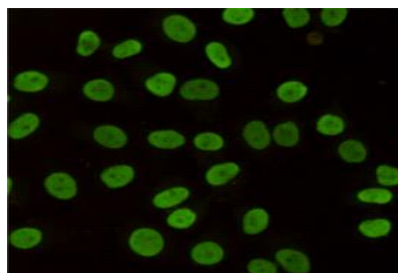
### DATA:



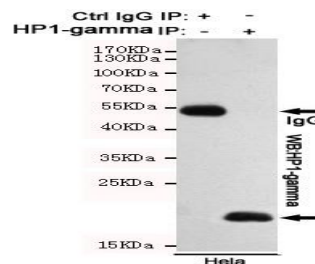
Western blot detection of CBX3 in HeLa, 3T3, C6, COS7 and CHO-K1 cell lysates using CBX3 mouse mAb (1:1000 diluted).



Immunohistochemical analysis of paraffin-embedded Prostate Cancer using CBX3 mouse mAb (1/200 dilution). Antigen retrieval was performed by pressure cooking in citrate buffer (pH 6.0).



Immunocytochemistry staining of HeLa cells fixed with 4% Paraformaldehyde and using anti-CBX3 mouse mAb (dilution 1:200).



Immunoprecipitation analysis of HeLa cell lysates using CBX3 mouse

### Bioworld Technology, Inc.

Add: 1660 South Highway 100, Suite 500 St. Louis Park, MN 55416, USA.

Email: [info@bioworld.com](mailto:info@bioworld.com)

Tel: 6123263284

Fax: 6122933841

### Bioworld technology, co. Ltd.

Add: No 9, weidi road Qixia District Nanjing, 210046, P. R. China.

Email: [info@biogot.com](mailto:info@biogot.com)

Tel: 0086-025-68037686

Fax: 0086-025-68035151



## PRODUCT DATA SHEET

Bioworld Technology, Inc.

mAb.

For research use only, not for use in diagnostic procedure.

Note:

---

### Bioworld Technology, Inc.

Add: 1660 South Highway 100, Suite 500 St. Louis Park,  
MN 55416, USA.

Email: [info@bioworld.com](mailto:info@bioworld.com)

Tel: 6123263284

Fax: 6122933841

### Bioworld technology, co. Ltd.

Add: No 9, weidi road Qixia District Nanjing, 210046,  
P. R. China.

Email: [info@biogot.com](mailto:info@biogot.com)

Tel: 0086-025-68037686

Fax: 0086-025-68035151