

E2F-1 (4G8) monoclonal antibody

Catalog: MB0176

Host: Mouse

Reactivity: Human, Rat

BackGround:

The E2F transcription factors are essential for regulation of the cell cycle. Physiological E2F is a heterodimer composed of an E2F subunit together with a DP subunit. Six members of the E2F family have been identified, and each E2F subunit has a DNA binding and a dimerization domain. E2F-1 to -5 activate transcription. E2F-1 to -3 bind pRb, and E2F-4 and -5 bind p107 or p130, and these interactions are under cell cycle control. E2F-1 has oncogenic properties in vivo and in vitro. E2F-1 can induce apoptosis through p53-dependent and -independent mechanisms. E2F-1 is stress-responsive, and is regulated by a PI3-kinase-like kinase family such as the ATM/ATR kinases.

Product:

1mg/ml in PBS with 0.02% sodium azide, 50% glycerol, pH7.2

Molecular Weight:

Predicted band size: 47KDa

Observed band size: 70KDa

Swiss-Prot:

Q01094

Purification&Purity:

The antibody was affinity-purified from mouse ascites by affinity-chromatography using epitope-specific immunogen and the purity is > 95% (by SDS-PAGE).

Applications:

WB: 1:500

IP: 1:50~200

IF: 1:50~200

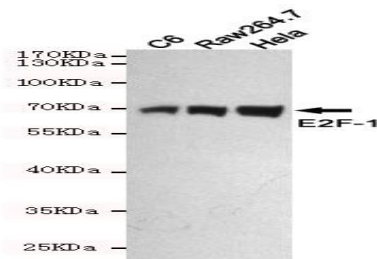
Storage&Stability:

Store at 4 °C short term. Aliquot and store at -20 °C long term. Avoid freeze-thaw cycles.

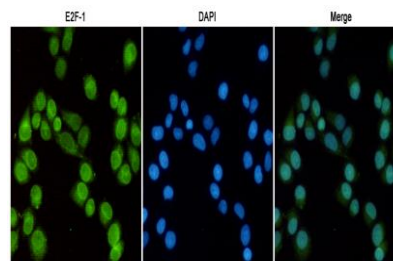
Specificity:

This antibody detects endogenous levels of E2F-1 and does not cross-react with related proteins.

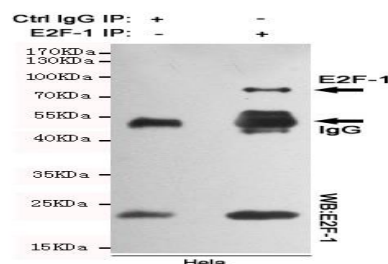
DATA:



Western blot detection of E2F-1 in C6, Raw264.7 and HeLa cell lysates using E2F-1 mouse mAb (1:500 diluted).



Immunofluorescent analysis of HeLa cells fixed with 4% Paraformaldehyde and using anti-E2F-1 mouse mAb (dilution 1:100). DAPI was used to stain nucleus (blue).



Immunoprecipitation analysis of HeLa cell lysates using E2F-1 mouse mAb.

Note:

For research use only, not for use in diagnostic procedure.

Bioworld Technology, Inc.

Add: 1660 South Highway 100, Suite 500 St. Louis Park, MN 55416, USA.

Email: info@bioworld.com

Tel: 6123263284

Fax: 6122933841

Bioworld technology, co. Ltd.

Add: No 9, weidi road Qixia District Nanjing, 210046, P. R. China.

Email: info@biogot.com

Tel: 0086-025-68037686

Fax: 0086-025-68035151



PRODUCT DATA SHEET

Bioworld Technology, Inc.

Bioworld Technology, Inc.

Add: 1660 South Highway 100, Suite 500 St. Louis Park,
MN 55416, USA.

Email: info@bioworld.com

Tel: 6123263284

Fax: 6122933841

Bioworld technology, co. Ltd.

Add: No 9, weidi road Qixia District Nanjing, 210046,
P. R. China.

Email: info@biogot.com

Tel: 0086-025-68037686

Fax: 0086-025-68035151