

SMYD2 monoclonal antibody

Catalog: MB0147

Host: Mouse

Reactivity: Human, Mouse

Background:

SMYD2 (SET and MYND domain containing 2), also known as KMT3C, HSKM-B or ZMYND14, is a 433 amino acid protein that contains one SET domain and one MYND-type zinc finger. Expressed at high levels in liver, heart, kidney, ovary and brain, SMYD2 functions as a lysine methyltransferase that, via methylation of p53, may play a role in repressing p53-mediated transcriptional regulation. The gene encoding SMYD2 maps to human chromosome 1, which spans 260 million base pairs, contains over 3,000 genes and comprises nearly 8% of the human genome. Chromosome 1 houses a large number of disease-associated genes, including those that are involved in familial adenomatous polyposis, Stickler syndrome, Parkinson's disease, Gaucher disease, schizophrenia and Usher syndrome.

Product:

1mg/ml in PBS with 0.02% sodium azide, 50% glycerol, pH7.2

Molecular Weight:

Predicted band size: 50KDa

Observed band size: 50KDa

Swiss-Prot:

Q9NRG4

Purification&Purity:

The antibody was affinity-purified from mouse ascites by

affinity-chromatography using epitope-specific immunogen and the purity is > 95% (by SDS-PAGE).

Applications:

WB: 1:1000

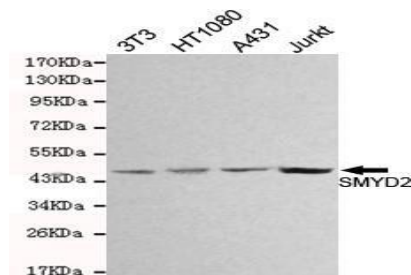
Storage&Stability:

Store at 4 °C short term. Aliquot and store at -20 °C long term. Avoid freeze-thaw cycles.

Specificity:

This antibody detects endogenous levels of SMYD2 and does not cross-react with related proteins

DATA:



Western blot detection of SMYD2 in 3T3, HT1080, A431&Jurkat cell lysates and using SMYD2 antibody (1:1000 diluted).

Note:

For research use only, not for use in diagnostic procedure.

Bioworld Technology, Inc.

Add: 1660 South Highway 100, Suite 500 St. Louis Park, MN 55416, USA.

Email: info@bioworld.com

Tel: 6123263284

Fax: 6122933841

Bioworld technology, co. Ltd.

Add: No 9, weidi road Qixia District Nanjing, 210046, P. R. China.

Email: info@biogot.com

Tel: 0086-025-68037686

Fax: 0086-025-68035151