

BMI1 monoclonal antibody

Catalog: MB0119

Host: Mouse

Reactivity: Human

BackGround:

Mel-18 and Bmi-1 are mammalian homologs of *Drosophila* Pc-g group proteins, as they are similarly expressed during development and implicated in the regulation of gene expression, axial skeleton development, and the control of proliferation and survival of hematopoietic cells. Mel-18 directly binds to DNA through a ring-finger motif and preferentially associates with juxtaposed enhancer elements on various genes, including Bcl-2, c-Myc and Hox. Mel-18 is an immediate early response gene within the c-Myc/Cdc25 signaling cascade that exhibits tumor suppressor activity and negatively regulates cell cycle progression by blocking S phase entry. Alternatively, Bmi-1 has been identified as a potent oncogene as it contributes to the transcriptional activation of genes implicated in early lymphoid development.

Product:

1mg/ml in PBS with 0.02% sodium azide, 50% glycerol, pH7.2

Molecular Weight:

Predicted band size:43KDa

Observed band size:43KDa

Swiss-Prot:

P35226

Purification&Purity:

The antibody was affinity-purified from mouse ascites by affinity-chromatography using epitope-specific immunogen and the purity is > 95% (by SDS-PAGE).

Applications:

WB:1:1000

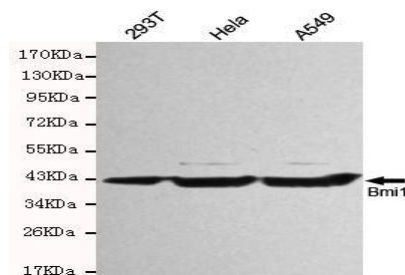
Storage&Stability:

Store at 4 °C short term. Aliquot and store at -20 °C long term. Avoid freeze-thaw cycles.

Specificity:

BMI1 mAb detects endogenous levels of BMI1 protein.

DATA:



Western blot detection of Bmi1 antibody in HeLa, A549 and 293T cell lysates using Bmi1 antibody (1:1000 diluted).

Note:

For research use only, not for use in diagnostic procedure.

Bioworld Technology, Inc.

Add: 1660 South Highway 100, Suite 500 St. Louis Park, MN 55416, USA.

Email: info@bioworld.com

Tel: 6123263284

Fax: 6122933841

Bioworld technology, co. Ltd.

Add: No 9, weidi road Qixia District Nanjing, 210046, P. R. China.

Email: info@biogot.com

Tel: 0086-025-68037686

Fax: 0086-025-68035151