

## TORC1 (N-terminus) monoclonal antibody

Catalog: MB0104

Host: Mouse IgG2b

Reactivity: Human

### BackGround:

Transcriptional coactivator for CREB1 which activates transcription through both consensus and variant cAMP response element (CRE) sites. Acts as a coactivator, in the SIK/TORC signaling pathway, being active when dephosphorylated and acts independently of CREB1 Ser-133 ' phosphorylation. Enhances the interaction of CREB1 with TAF4. Regulates the expression of specific CREB-activated genes such as the steroidogenic gene, StAR. Potent coactivator of PGC1alpha and inducer of mitochondrial biogenesis in muscle cells. Also coactivator for TAX activation of the human T-cell leukemia virus type 1 (HTLV-1) long terminal repeats (LTR). In the hippocampus, involved in late-phase long-term potentiation (L-LTP) maintenance at the Schaffer collateral-CA1 synapses (By similarity)

### Product:

Mouse IgM, 1mg/ml in PBS with 0.02% sodium azide, 50% glycerol, pH7.2

### Molecular Weight:

Predicted band size:69KDa

Observed band size:69KDa

### Swiss-Prot:

Q6UUV9

### Purification&Purity:

The antibody was affinity-purified from mouse ascites by affinity-chromatography using epitope-specific immunogen and the purity is > 95% (by SDS-PAGE).

### Applications:

WB: 1:1000

ICC: 1:100~300

IP: 1:50~200

FC: 1:50~100

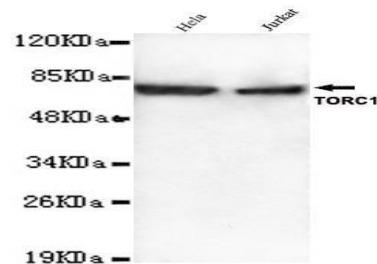
### Storage&Stability:

Store at 4 °C short term. Aliquot and store at -20 °C long term. Avoid freeze-thaw cycles.

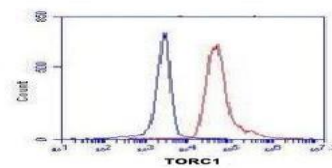
### Specificity:

This antibody detects endogenous levels of TORC1 and does not cross-react with related proteins

### DATA:

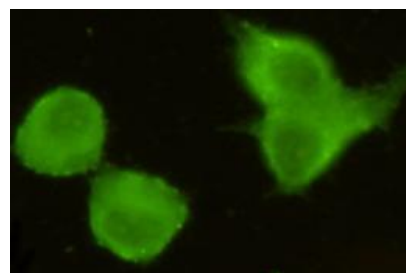


Western blot detection of TORC1 (N-terminus) antibody in HeLa&Jurkat lysates using TORC1 (N-terminus) antibody (1:1000 diluted) .



By Bioworld Tech

Flow Cytometry analysis of K562 cells stained with TORC1(N-terminus) (red, 1/100 dilution), followed by FITC-conjugated goat anti-mouse IgG. Blue line histogram represents the isotype control, normal mouse IgG.



Immunocytochemistry stain of HeLa using TORC1 antibody (1:300).

### Bioworld Technology, Inc.

Add: 1660 South Highway 100, Suite 500 St. Louis Park, MN 55416, USA.

Email: [info@bioworld.com](mailto:info@bioworld.com)

Tel: 6123263284

Fax: 6122933841

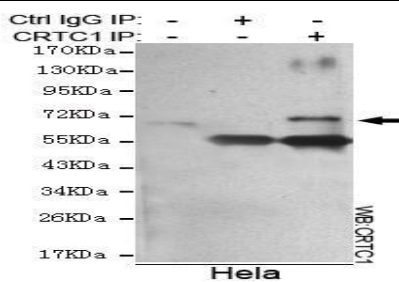
### Bioworld technology, co. Ltd.

Add: No 9, weidi road Qixia District Nanjing, 210046, P. R. China.

Email: [info@biogot.com](mailto:info@biogot.com)

Tel: 0086-025-68037686

Fax: 0086-025-68035151

**Note:**

For research use only, not for use in diagnostic procedure.

Immunoprecipitation analysis of HeLa cell lysate using CRTC1 antibody.

**Bioworld Technology, Inc.**Add: 1660 South Highway 100, Suite 500 St. Louis Park,  
MN 55416, USA.Email: [info@bioworld.com](mailto:info@bioworld.com)

Tel: 6123263284

Fax: 6122933841

**Bioworld technology, co. Ltd.**Add: No 9, weidi road Qixia District Nanjing, 210046,  
P. R. China.Email: [info@biogot.com](mailto:info@biogot.com)

Tel: 0086-025-68037686

Fax: 0086-025-68035151