

Rab2A (C-Terminus) monoclonal antibody

Catalog: MB0091

Host: Mouse

Reactivity: Human

BackGround:

Members of the Rab protein family are nontransforming monomeric GTP-binding proteins of the Ras superfamily that contain 4 highly conserved regions involved in GTP binding and hydrolysis. Rabs are prenylated, membrane-bound proteins involved in vesicular fusion and trafficking. The mammalian RAB proteins show striking similarities to the *S. cerevisiae* YPT1 and SEC4 proteins, Ras-related GTP-binding proteins involved in the regulation of secretion.

Product:

Mouse IgG1, 1mg/ml in PBS with 0.02% sodium azide, 50% glycerol, pH7.2

Molecular Weight:

Predicted band size:24KDa

Observed band size:24KDa

Swiss-Prot:

P61019

Purification&Purity:

The antibody was affinity-purified from mouse ascites by affinity-chromatography using epitope-specific immunogen and the purity is > 95% (by SDS-PAGE).

Applications:

WB: 1:800

ICC: 1:100~200

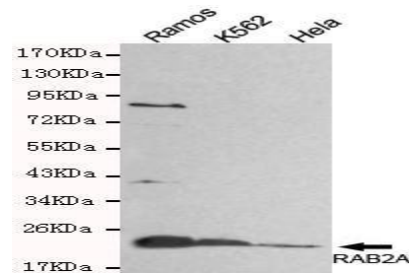
Storage&Stability:

Store at 4 °C short term. Aliquot and store at -20 °C long term. Avoid freeze-thaw cycles.

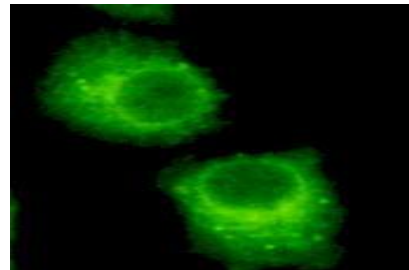
Specificity:

This antibody detects endogenous levels of Rab2A and does not cross-react with related proteins

DATA:



Western blot detection of RAB2A in HeLa, Ramos&K562 cell lysates and using RAB2A antibody (1:800 diluted) .



Immunocytochemistry of HeLa cells using anti- RAB2A(C-Terminus) antibody diluted 1:200

Note:

For research use only, not for use in diagnostic procedure.

Bioworld Technology, Inc.

Add: 1660 South Highway 100, Suite 500 St. Louis Park, MN 55416, USA.

Email: info@bioworld.com

Tel: 6123263284

Fax: 6122933841

Bioworld technology, co. Ltd.

Add: No 9, weidi road Qixia District Nanjing, 210046, P. R. China.

Email: info@biogot.com

Tel: 0086-025-68037686

Fax: 0086-025-68035151