

ATP-Citrate Lyase (C-terminus) monoclonal antibody

Catalog: MB0070

Host: Mouse

Reactivity: Human

BackGround:

ATP citrate lyase (ACL) is the primary enzyme responsible for the synthesis of cytosolic acetyl-CoA in many tissues. The enzyme is a tetramer of four identical subunits. It catalyzes the formation of acetyl-CoA and oxaloacetate from citrate and CoA with a concomitant hydrolysis of ATP to ADP and phosphate. One of these products, acetyl-CoA, serves several important biosynthetic pathways, including lipogenesis and cholesterol synthesis. In nervous tissue, ATP citrate-lyase may be involved in the biosynthesis of acetylcholine. NDPK has been found to phosphorylate ACL and insulin to increase phosphorylation of ACL.

Product:

1mg/ml in PBS with 0.02% sodium azide, 50% glycerol, pH7.2

Molecular Weight:

Predicted band size:120KDa

Observed band size:120KDa

Swiss-Prot:

P53396

Purification&Purity:

The antibody was affinity-purified from mouse ascites by affinity-chromatography using epitope-specific immunogen and the purity is > 95% (by SDS-PAGE).

Applications:

WB: 1:1000

ICC: 1:50~200

FC: 1:50~100

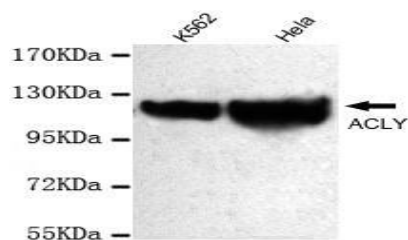
Storage&Stability:

Store at 4 °C short term. Aliquot and store at -20 °C long term. Avoid freeze-thaw cycles.

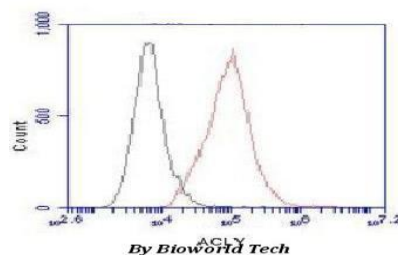
Specificity:

This antibody detects endogenous levels of ATP-Citrate Lyase (C-terminus) and does not cross-react with related proteins

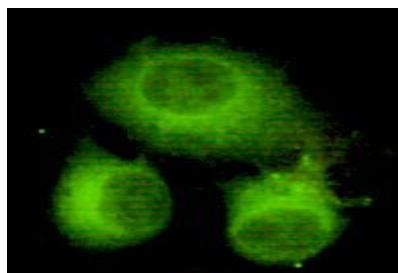
DATA:



Western blot detection of ATP-Citrate Lyase antibody in K562&HeLa cell lysates using ATP-Citrate Lyase antibody (1:1000 diluted).



Flow Cytometry analysis of HeLa cells stained with ATP-Citrate Lyase (red, 1/100 dilution), followed by FITC-conjugated goat anti-mouse IgG. Black line histogram represents the isotype control, normal mouse IgG



Immunocytochemistry of HeLa cells using anti-ATP-Citrate Lyase (C-terminus) antibody diluted 1:150.

Note:

For research use only, not for use in diagnostic procedure.

Bioworld Technology, Inc.

Add: 1660 South Highway 100, Suite 500 St. Louis Park, MN 55416, USA.

Email: info@bioworld.com

Tel: 6123263284

Fax: 6122933841

Bioworld technology, co. Ltd.

Add: No 9, weidi road Qixia District Nanjing, 210046, P. R. China.

Email: info@biogot.com

Tel: 0086-025-68037686

Fax: 0086-025-68035151



PRODUCT DATA SHEET

Bioworld Technology, Inc.

Bioworld Technology, Inc.

Add: 1660 South Highway 100, Suite 500 St. Louis Park,
MN 55416, USA.

Email: info@bioworld.com

Tel: 6123263284

Fax: 6122933841

Bioworld technology, co. Ltd.

Add: No 9, weidi road Qixia District Nanjing, 210046,
P. R. China.

Email: info@biogot.com

Tel: 0086-025-68037686

Fax: 0086-025-68035151