

Beclin 1 monoclonal antibody

Catalog: MB0030

Host: Mouse

Reactivity: Human, Mouse

BackGround:

BECN1 (beclin 1) is a coiled-coil protein that has been implicated as an

inhibitor of tumorigenesis. BECN1, which associates with Bcl-2, plays a

significant role in autophagy. Autophagy is the degradation of cellular proteins

in the lysosomes, and when this pathway is suppressed, cell growth is

deregulated. Autophagy is controlled by the same signal transduction pathway

that induces the phosphorylation of the ribosomal protein S6, and both

are mediated via amino acids. BECN1 expression in various carcinoma cell

lines, such as MCF7, is low, whereas it is ubiquitously expressed in normal

breast tissue. In transfected MCF7 cells, BECN1 complements autophagocytosis

and, subsequently, inhibits cellular proliferation. Additionally, BECN1

shares structural similarity to the yeast autophagy gene product, APG6, and

was one of the first mammalian proteins discovered to mediate autophagy.

Product:

1mg/ml in PBS with 0.02% sodium azide, 50% glycerol, pH7.2

Molecular Weight:

Predicted band size: 52KDa

Observed band size: 55KDa

Swiss-Prot:

Q14457

Purification&Purity:

The antibody was affinity-purified from mouse ascites by affinity-chromatography using epitope-specific immunogen and the purity is > 95% (by SDS-PAGE).

Applications:

WB: 1:1000

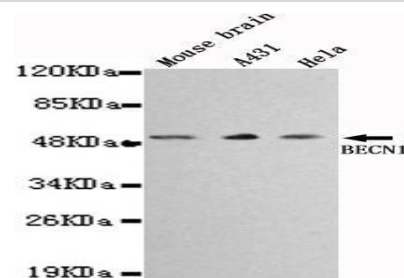
Storage&Stability:

Store at 4 °C short term. Aliquot and store at -20 °C long term. Avoid freeze-thaw cycles.

Specificity:

This antibody detects endogenous levels of Beclin 1 and does not cross-react with related proteins

DATA:



Western blot detection of BECN1 in Mouse brain, A431&HeLa cell lysates using BECN1 antibody (1:1000 diluted).

Note:

For research use only, not for use in diagnostic procedure.

Bioworld Technology, Inc.

Add: 1660 South Highway 100, Suite 500 St. Louis Park, MN 55416, USA.

Email: info@bioworld.com

Tel: 6123263284

Fax: 6122933841

Bioworld technology, co. Ltd.

Add: No 9, weidi road Qixia District Nanjing, 210046, P. R. China.

Email: info@biogot.com

Tel: 0086-025-68037686

Fax: 0086-025-68035151