

## Cdk1/Cdc2 monoclonal antibody

Catalog: MB0019

Host: Mouse

Reactivity: Human

### BackGround:

Cdc2, an evolutionarily conserved serine/threonine-specific protein kinase, is essential in the cell cycle transition from G2 to M phase. Cdc2 is regulated by association with B-type cyclins and by reversible phosphorylation. Cyclin B binding facilitates the phosphorylation of Cdc2 p34 on three regulatory sites: threonine 14, tyrosine 15, and threonine 161. In higher eukaryotes, Cdc2 is negatively regulated by phosphorylation of two residues located in the ATP-binding site, Thr 14 and Tyr 15. Cdc2 is positively regulated by the cyclin-dependent phosphorylation of Thr 161. Both phosphorylation and de-phosphorylation at Thr 161 are required for progression through the cell cycle.

### Product:

1mg/ml in PBS with 0.02% sodium azide, 50% glycerol, pH7.2

### Molecular Weight:

Predicted band size:34KDa

Observed band size:34KDa

### Swiss-Prot:

P06493

### Purification&Purity:

The antibody was affinity-purified from mouse ascites by affinity-chromatography using epitope-specific immunogen and the purity is > 95% (by SDS-PAGE).

### Applications:

WB: 1:1000

ICC: 1:50~200

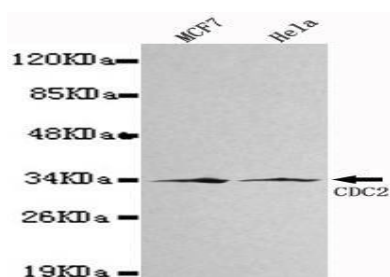
### Storage&Stability:

Store at 4 °C short term. Aliquot and store at -20 °C long term. Avoid freeze-thaw cycles.

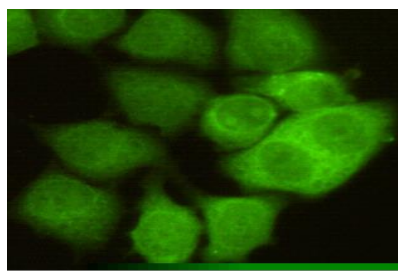
### Specificity:

This antibody detects endogenous levels of Cdk1/Cdc2 and does not cross-react with related proteins

### DATA:



Western blot detection of CDC2/CDK1 in MCF7&HeLa cell lysates using CDC2/CDK1 antibody (1:1000 diluted).



Immunocytochemistry of HeLa cells using anti- CDC2 antibody diluted 1:50

### Note:

For research use only, not for use in diagnostic procedure.

### Bioworld Technology, Inc.

Add: 1660 South Highway 100, Suite 500 St. Louis Park, MN 55416, USA.

Email: [info@bioworld.com](mailto:info@bioworld.com)

Tel: 6123263284

Fax: 6122933841

### Bioworld technology, co. Ltd.

Add: No 9, weidi road Qixia District Nanjing, 210046, P. R. China.

Email: [info@biogot.com](mailto:info@biogot.com)

Tel: 0086-025-68037686

Fax: 0086-025-68035151