

## Tubulin $\beta$ monoclonal antibody

Catalog: MB0009      Host: Mouse      Reactivity: Hu-  
man, Mouse, Rat, Monkey, Goat, Hamster

### Background:

Microtubules are constituent parts of the mitotic apparatus, cilia, flagella, and elements of the cytoskeleton. They consist principally of 2 soluble proteins, alpha- and beta-tubulin, each of about 55,000 kDa.

Antibodies against beta Tubulin are useful as loading controls for Western Blotting. However it should be noted that levels of beta Tubulin may not be stable in certain cells.

### Product:

1mg/ml in PBS with 0.02% sodium azide, 50% glycerol, pH7.2

### Molecular Weight:

Predicted band size: 55KDa

Observed band size: 55KDa

### Swiss-Prot:

Q13509/P04350/P68371/P07437/Q13885/Q9BUF5

### Purification&Purity:

The antibody was affinity-purified from mouse ascites by affinity-chromatography using epitope-specific immunogen and the purity is > 95% (by SDS-PAGE).

### Applications:

WB: 1:1000

ICC: 1:200~1000

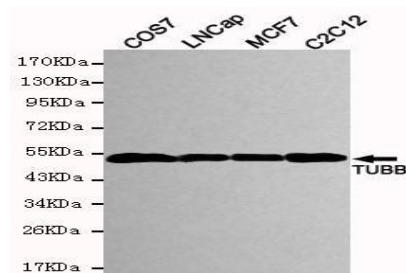
### Storage&Stability:

Store at 4 °C short term. Aliquot and store at -20 °C long term. Avoid freeze-thaw cycles.

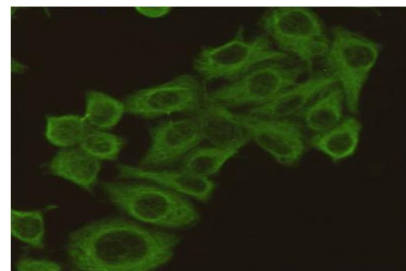
### Specificity:

This antibody detects endogenous levels of Tubulin beta and does not cross-react with related proteins.

### DATA:



Western blot detection of TUBB in COS7, LNCap, MCF7 & C2C12 cell lysates and using TUBB antibody (1:5000 diluted). Predicted band size: 55KDa.



Immunocytochemistry staining of HeLa cells fixed by anhydrous methanol for 2 h at -20 °C and using anti-TUBB antibody (dilution 1:1000).

### Note:

For research use only, not for use in diagnostic procedure.

### Bioworld Technology, Inc.

Add: 1660 South Highway 100, Suite 500 St. Louis Park, MN 55416, USA.

Email: [info@bioworld.com](mailto:info@bioworld.com)

Tel: 6123263284

Fax: 6122933841

### Bioworld technology, co. Ltd.

Add: No 9, weidi road Qixia District Nanjing, 210046, P. R. China.

Email: [info@biogot.com](mailto:info@biogot.com)

Tel: 0086-025-68037686

Fax: 0086-025-68035151