

## TUBB3 monoclonal antibody

Catalog: LM0566

Host: Mouse

Reactivity: Human

### Background:

Tubulin, beta 3, also known as TUBB3. Tubulin is the major constituent of microtubules. It binds two moles of GTP, one at an exchangeable site on the beta chain and one at a non exchangeable site on the alpha-chain. Tubulin is a highly conserved protein with a molecular weight of ~50 kDa. Microtubules play key roles in chromosome segregation in mitosis, intracellular transport, ciliary and flagellar bending, and structural support of the cytoskeleton. The two main tubulin isoforms,  $\alpha$ - and  $\beta$ -tubulin, are usually products of separate genes.

### Product:

Mouse IgG1, 1mg/ml in PBS with 0.02% sodium azide, 50% glycerol, pH7.2

### Molecular Weight:

~ 50 kDa

### Swiss-Prot:

Q13509

### Purification&Purity:

Ascitic fluid containing 0.03% sodium azide.

### Applications:

WB: 1:500 - 1:2000

ICC: 1:200 - 1:1000

FCM: 1:200 - 1:400

ELISA: 1:10000

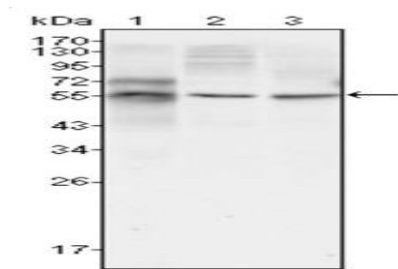
### Storage&Stability:

Store at 4 °C short term. Aliquot and store at -20 °C long term. Avoid freeze-thaw cycles.

### Specificity:

TUBB3 monoclonal antibody detects endogenous levels of TUBB3 protein.

### DATA:

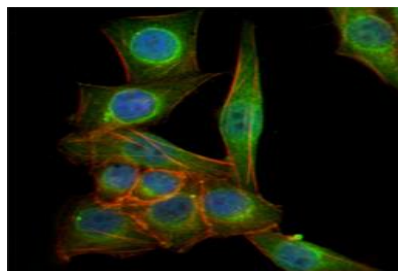


Western blot (WB) analysis of TUBB3 monoclonal antibody

Lane1:HepG2 whole cell lysate

Lane2:A549 whole cell lysate

Lane3:Hela whole cell lysate



Immunofluorescence analysis of PANC-1 cells using TUBB3 mouse mAb (green).

### Note:

For research use only, not for use in diagnostic procedure.

### Bioworld Technology, Inc.

Add: 1660 South Highway 100, Suite 500 St. Louis Park, MN 55416, USA.

Email: [info@bioworld.com](mailto:info@bioworld.com)

Tel: 6123263284

Fax: 6122933841

### Bioworld technology, co. Ltd.

Add: No 9, weidi road Qixia District Nanjing, 210046, P. R. China.

Email: [info@biogot.com](mailto:info@biogot.com)

Tel: 0086-025-68037686

Fax: 0086-025-68035151