

S-ECD monoclonal antibody (2)

Catalog: HMB005-Y

Host: Human

Reactivity: COVID-19

BackGround:

Fully humanized monoclonal antibody paired with human monoclonal antibody

LOCUS:QHD43416 1273aa linear VRL
18-MAR-2020

DEFINITION:surface glycoprotein [Severe acute respiratory syndrome coronavirus 2].

ACCESSION:QHD43416

VERSION:QHD43416.1

DBSOURCE:accession MN908947.3

SOURCE:Severe acute respiratory syndrome coronavirus 2 (SARS-CoV2)

ORGANISM:Viruses; Riboviria; Nidovirales; Coronaviridae; Orthocoronavirinae; Betacoronavirus; Sarbecovirus.

Product:

1mg/ml in PBS with 0.02% sodium azide,pH7.2

Size:

100ug/1mg

Swiss-Prot:

QHD43416.1

Purification&Purity:

The antibody was purified from 293f recombinant protein and the purity is > 95% (by SDS-PAGE).

Applications:

ELISA: ECD-1:80000

WB: 1:3000~4000

Neutralization

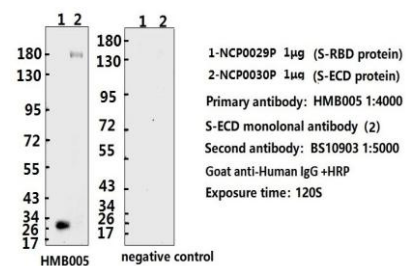
Storage&Stability:

Store at 4 °C short term. Aliquot and store at -20 °C long term. Avoid freeze-thaw cycles.

Specificity:

S-ECD mAb detects endogenous levels of S-ECD protein.

DATA:



ELISA experiment

	3	4	
A	0.115	2.449	1:1000
B	0.12	2.254	1:10000
C	0.101	2.122	1:20000
D	0.107	1.661	1:40000
E	0.109	1.284	1:80000
F	0.118	0.843	1:160000
G	0.123	0.560	1:320000
H	0.102	0.084	Blank control

1.Coating original concentration: 2ug/ml,100ul/hole sample is S-RBD protein (NCP0029P) and S-ECD protein (NCP0030P)
2.Primary antibody: HMB005 S-ECD monoclonal antibody (2)
3.Second antibody: BS10903 Goat anti-Human IgG +HRP 1:10000
4.Develop :15min 100ul/hole
5.Stop stop buffer 50ul/hole
6.ELISA result are shown in the figure

Note: HMB005 don't react with NCP0029P

Note:

For research use only, not for use in diagnostic procedure.

Bioworld Technology, Inc.

Add: 1660 South Highway 100, Suite 500 St. Louis Park, MN 55416,USA.

Email: info@bioworld.com

Tel: 6123263284

Fax: 6122933841

Bioworld technology, co. Ltd.

Add: No 9, weidi road Qixia District Nanjing, 210046, P. R. China.

Email: info@biogot.com

Tel: 0086-025-68037686

Fax: 0086-025-68035151