

BCL-XL(Ab-62) polyclonal antibody

Catalog: BSP1032

Host: Rabbit

Reactivity: Human,Rat,Mouse

BackGround:

Bcl-xL prevents apoptosis through two different mechanisms: heterodimerization with an apoptotic protein inhibits its apoptotic effect and formation of mitochondrial outer membrane pores help maintain a normal membrane state under stressful conditions. Bcl-xL is phosphorylated by JNK following treatment with microtubule-damaging agents, such as paclitaxel, vinblastine, and nocodazole.

Product:

Rabbit IgG, 1mg/ml in PBS with 0.02% sodium azide, 50% glycerol, pH7.2.

Molecular Weight:

~ 26 kDa

Swiss-Prot:

Q07817

Purification&Purity:

The antibody was affinity-purified from rabbit antiserum by affinity-chromatography using epitope-specific immunogen and the purity is > 95% (by SDS-PAGE).

Applications:

WB: 1:5000~1:10000

IF: 1:50~1:200

Storage&Stability:

Store at 4 °C short term. Aliquot and store at -20 °C long term. Avoid freeze-thaw cycles.

Specificity:

BCL-XL(Ab-62) polyclonal antibody detects endogenous levels of BCL-XL protein.

DATA:

Western blot (WB) analysis of BCL-XL(Ab-62) polyclonal antibody at 1:5000 dilution

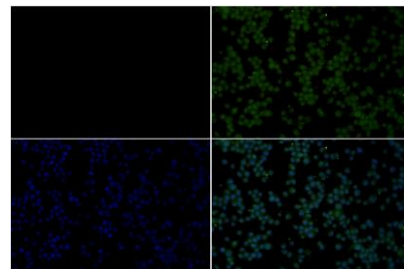
Lane1:Hela whole cell lysate(40ug)

Lane2:MCF-7 whole cell lysate(40ug)

Lane3:PC12 whole cell lysate(40ug)

Lane4:BV2 whole cell lysate(40ug)

Lane5:PC3 whole cell lysate(40ug)



Immunofluorescence analysis of BV2 cells using BCL-XL antibody at dilution of 1:50.

Note:

For research use only, not for use in diagnostic procedure.

Bioworld Technology, Inc.

Add: 1660 South Highway 100, Suite 500 St. Louis Park, MN 55416, USA.

Email: info@bioworld.com

Tel: 6123263284

Fax: 6122933841

Bioworld technology, co. Ltd.

Add: No 9, weidi road Qixia District Nanjing, 210046, P. R. China.

Email: info@biogot.com

Tel: 0086-025-68037686

Fax: 0086-025-68035151