

HAPLN1 Rabbit monoclonal antibody

Catalog: BS9911M

Host: Rabbit

Reactivity: Human,Mouse,Rat

BackGround:

The human cartilage link protein, also designated HAPLN1, is a member of the hyaluronan and proteoglycan link protein (HAPLN) family of proteins. This family contains 4 proteins with approximately 50% homology. The human cartilage link protein strengthens tissue architecture by using hyaluronic acid to stabilize the aggregates of proteoglycan monomers inside the extracellular cartilage matrix. It is widely expressed in most tissue types except brain tissue where, much like the other human cartilage link protein genes, it is weakly expressed. The HAPLN and the brain-specific CSPG genes, as well as other members of the link module superfamily, appear to have a common ancestral gene origin.

Product:

Rabbit IgG, 1mg/ml in PBS with 0.02% sodium azide, 50% glycerol, pH7.2

Molecular Weight:

~ 48 kDa

Swiss-Prot:

P10915

Purification&Purity:

Affinity Chromatography

Applications:

WB: 1:500-1:1000

ICC/IF: 1:50-1:200

IHC-P: 1:50-1:100

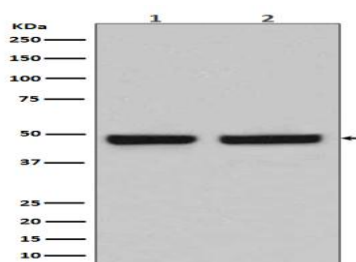
Storage&Stability:

Store at 4 °C short term. Aliquot and store at -20 °C long term. Avoid freeze-thaw cycles.

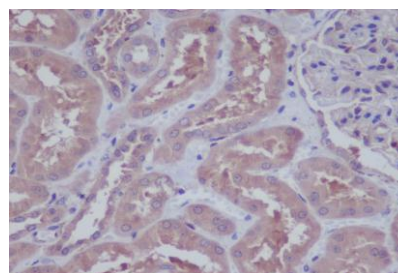
Specificity:

HAPLN1 Rabbit mAb detects endogenous levels of HAPLN1 protein.

DATA:



Western blot analysis of HAPLN1 in (1) Caco2 lysates; (2) mouse spleen lysates using HAPLN1 antibody.



Immunohistochemistry analysis of paraffin-embedded Human kidney using HAPLN1 antibody. High-pressure and temperature Sodium Citrate pH 6.0 was used for antigen retrieval.

Note:

For research use only, not for use in diagnostic procedure.

Bioworld Technology, Inc.

Add: 1660 South Highway 100, Suite 500 St. Louis Park, MN 55416, USA.

Email: info@bioworld.com

Tel: 6123263284

Fax: 6122933841

Bioworld technology, co. Ltd.

Add: No 9, weidi road Qixia District Nanjing, 210046, P. R. China.

Email: info@biogot.com

Tel: 0086-025-68037686

Fax: 0086-025-68035151