

p38 Rabbit monoclonal antibody

Catalog: BS9851M

Host: Rabbit

Reactivity: Human, Mouse, Rat

BackGround:

MAP (mitogen-activated protein) kinases play a significant role in many biological processes, including cell adhesion and spreading, cell differentiation and apoptosis. p38 α , p38 β and p38 γ , also known as MAPK14, MAPK11 and MAPK12, respectively, each contain one protein kinase domain and belong to the MAP kinase family. Expressed in different areas throughout the body with common expression patterns in heart, p38 proteins use magnesium as a cofactor to catalyze the ATP-dependent phosphorylation of target proteins. Via their catalytic activity, p38 α , p38 β and p38 γ are involved in a variety of events throughout the cell, including signal transduction pathways, cytokine production and cell proliferation and differentiation.

Product:

Rabbit IgG, 1mg/ml in PBS with 0.02% sodium azide, 50% glycerol, pH7.2

Molecular Weight:

~ 42 kDa

Swiss-Prot:

Q16539

Purification&Purity:

Protein A affinity purified

Applications:

WB: 1:1000-1:5000

ICC: 1:50-1:200

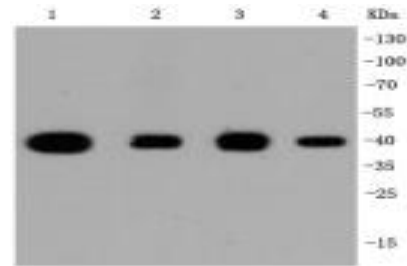
Storage&Stability:

Store at 4 °C short term. Aliquot and store at -20 °C long term. Avoid freeze-thaw cycles.

Specificity:

This antibody detects endogenous levels of p38 and does not cross-react with related proteins.

DATA:



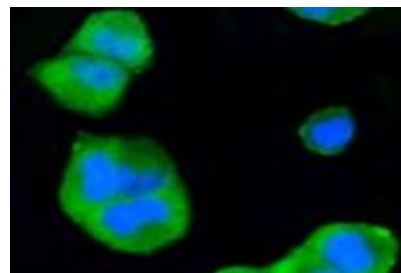
Western blot (WB) analysis of p38 Rabbit mAb at 1:1000 dilution

Lane1:Hela whole cell lysate

Lane2:NIH/3T3 whole cell lysate

Lane3:PC12 whole cell lysate

Lane4:Jurkat whole cell lysate



ICC staining p38 in HeLa cells (green). The nuclear counter stain is DAPI (blue). Cells were fixed in paraformaldehyde, permeabilised with 0.25% Triton *100/PBS.

Note:

For research use only, not for use in diagnostic procedure.

Bioworld Technology, Inc.

Add: 1660 South Highway 100, Suite 500 St. Louis Park, MN 55416, USA.

Email: info@bioworld.com

Tel: 6123263284

Fax: 6122933841

Bioworld technology, co. Ltd.

Add: No 9, weidi road Qixia District Nanjing, 210046, P. R. China.

Email: info@biogot.com

Tel: 0086-025-68037686

Fax: 0086-025-68035151