

## RSK1 p90 (Phospho-T359/S363) polyclonal antibody

Catalog: BS94048

Host: Rabbit

Reactivity: Human, Mouse, Rat

### BackGround:

The family of ribosomal S6 kinases (Rsks), designated Rsk-1 (or MAPKAP kinase-1), Rsk-2 and Rsk-3, are intracellular serine/threonine kinases that are important signaling intermediates in response to a broad range of ligand activated receptor tyrosine kinases. A unique feature common to the members of the Rsk family is that each possesses two non-identical complete kinase catalytic domains. An additional Rsk protein, Rsk-4, shows a high level of homology to the three previously isolated members of the human Rsk family. Rsk-4 is most abundantly expressed in brain and kidney and plays a role in normal neuronal development. The family of ribosomal S6 kinases includes p70 S6 kinase and p70 S6 kinase  $\beta$ , which are thought to have similar regulatory functions. MSK1 (also designated RLPK) is a novel Rsk-related protein, which, like the p90 Rsk family members, contains two non-identical complete kinase catalytic domains.

### Product:

Rabbit IgG, 1mg/ml in PBS with 0.02% sodium azide, 50% glycerol, pH7.2

### Molecular Weight:

90 kDa

### Swiss-Prot:

Q15418(Human) P18653(Mouse) Q63531(Rat)

### Purification&Purity:

ProA affinity purified

### Applications:

WB:1:1,000-1:2,000

ICC:1:50-1:200

IHC:1:50-1:200

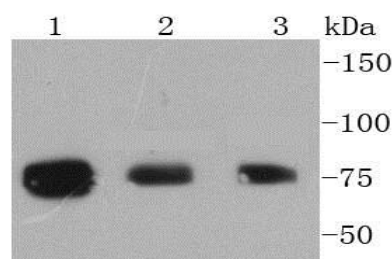
### Storage&Stability:

Store at +4 °C after thawing. Aliquot store at -20 °C or -80 °C. Avoid repeated freeze / thaw cycles.

### Specificity:

RSK1 p90 (Phospho-T359/S363) polyclonal antibody detects endogenous levels of RSK1 p90 protein only when phosphorylated at T359/S363.

### DATA:

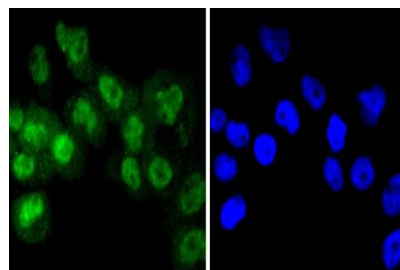


Western blot analysis of Phospho-RSK1 p90(T359+S363) on different lysates using anti-Phospho-RSK1 p90(T359+S363) antibody at 1/1,000 dilution. Positive control:

Lane 1: A431

Lane 2: 293

Lane 3: MCF-7



ICC staining Phospho-RSK1 p90(T359+S363) in A431 cells (green).

The nuclear counter stain is DAPI (blue). Cells were fixed in paraformaldehyde, permeabilised with 0.25% Triton X100/PBS.

### Note:

For research use only, not for use in diagnostic procedure.

### Bioworld Technology, Inc.

Add: 1660 South Highway 100, Suite 500 St. Louis Park, MN 55416, USA.

Email: [info@bioworld.com](mailto:info@bioworld.com)

Tel: 6123263284

Fax: 6122933841

### Bioworld technology, co. Ltd.

Add: No 9, weidi road Qixia District Nanjing, 210046, P. R. China.

Email: [info@biogot.com](mailto:info@biogot.com)

Tel: 0086-025-68037686

Fax: 0086-025-68035151