

Rac1/Cdc42 (Phospho-Ser71) polyclonal antibody

Catalog: BS94041

Host: Rabbit

Reactivity: Human

BackGround:

A large number of low molecular weight GTP-binding proteins of the Ras superfamily have been identified in eukaryotic cells; they regulate many fundamental processes such as cell growth, vesicle traffic and cytoskeletal organization. GTPase-activating proteins accelerate the intrinsic rate of GTP hydrolysis of Ras-related proteins, resulting in downregulation of their active form. Rac 1 is activated in a type I interferon (IFN) dependent manner; its function is required for downstream engagement of the p38 MAP kinase pathway. The p38 MAP kinase plays an essential role in IFN-dependent transcriptional regulation. The serine/threonine kinase Akt, of the phospho-inositide 3-kinase signal transduction pathway phosphorylates serine 71 of Rac 1. The superfamily of GTP-binding proteins, for which the Ras proteins are prototypes, has been implicated in regulation of diverse biological activities involving various aspects of cell growth and division. One mammalian member of the family, Cdc42, has an amino acid sequence that is similar to those of various members of the Ras superfamily proteins, including N-, K- and H-Ras, Rho proteins and the Rac proteins. On the basis of in vitro phosphorylation studies, it has been suggested that human Cdc42 may function in the signaling pathway of the EGF receptor or related growth factor receptor protein kinases. The Dbl oncogene has been shown to specifically catalyze dissociation of GDP from human Cdc42.

Product:

Rabbit IgG, 1mg/ml in PBS with 0.02% sodium azide, 50% glycerol, pH7.2

Molecular Weight:

23/21 kDa

Swiss-Prot:

P60953(Human) P63000(Human)

Purification&Purity:

ProA affinity purified

Applications:

WB:1:500-1:1,000

ICC:1:50-1:200

IHC:1:50-1:200

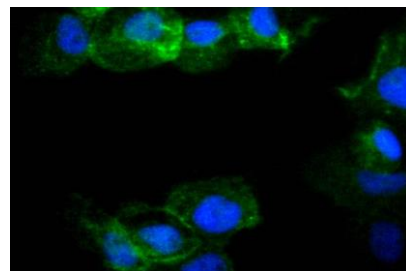
Storage&Stability:

Store at +4 °C after thawing. Aliquot store at -20 °C or -80 °C. Avoid repeated freeze / thaw cycles.

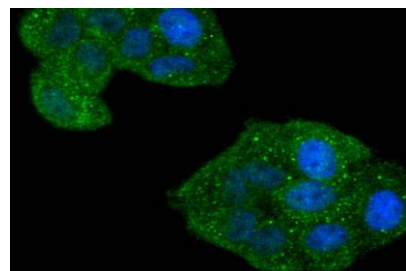
Specificity:

Rac1/Cdc42 (Phospho-Ser71) polyclonal antibody detects endogenous levels of Rac1/Cdc42 protein only when phosphorylated at Ser71.

DATA:



ICC staining Phospho-Rac1+Cdc42(Ser71) in A431 cells (green). The nuclear counter stain is DAPI (blue). Cells were fixed in paraformaldehyde, permeabilised with 0.25% Triton X100/PBS.



ICC staining Phospho-Rac1+Cdc42(Ser71) in HeLa cells (green). The nuclear counter stain is DAPI (blue). Cells were fixed in paraformaldehyde, permeabilised with 0.25% Triton X100/PBS.

Note:

For research use only, not for use in diagnostic procedure.

Bioworld Technology, Inc.

Add: 1660 South Highway 100, Suite 500 St. Louis Park, MN 55416, USA.

Email: info@bioworld.com

Tel: 6123263284

Fax: 6122933841

Bioworld technology, co. Ltd.

Add: No 9, weidi road Qixia District Nanjing, 210046, P. R. China.

Email: info@biogot.com

Tel: 0086-025-68037686

Fax: 0086-025-68035151



PRODUCT DATA SHEET

Bioworld Technology, Inc.

Bioworld Technology, Inc.

Add: 1660 South Highway 100, Suite 500 St. Louis Park,
MN 55416, USA.

Email: info@bioworld.com

Tel: 6123263284

Fax: 6122933841

Bioworld technology, co. Ltd.

Add: No 9, weidi road Qixia District Nanjing, 210046,
P. R. China.

Email: info@biogot.com

Tel: 0086-025-68037686

Fax: 0086-025-68035151