

## Rock-1 (T298) polyclonal antibody

Catalog: BS9196

Host: Rabbit

Reactivity: Human

### BackGround:

Rho proteins function as molecular switches that are able to turn cytokinesis on and off. Although little is known about signaling downstream of Rho, a host of putative Rho effector proteins have been described, including rhotilin, Rhotekin, citron and the serine/threonine kinase, protein kinase N. Two additional Rho-activated serine/threonine kinases have been described, designated Rock-1 and Rock-2 (also referred to as Roka) for Rho-associated coil-containing protein kinase. Rock-1 and Rock-2 share a structural similarity with myotonic dystrophy kinase.

### Product:

Rabbit IgG, 1mg/ml in PBS with 0.02% sodium azide, 50% glycerol, pH7.2

### Molecular Weight:

~ 158 kDa

### Swiss-Prot:

Q13464

### Purification&Purity:

The antibody was affinity-purified from rabbit antiserum by affinity-chromatography using epitope-specific immunogen and the purity is > 95% (by SDS-PAGE).

### Applications:

WB: 1:500~1:1000

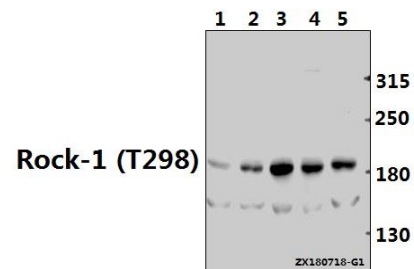
### Storage&Stability:

Store at 4 °C short term. Aliquot and store at -20 °C long term. Avoid freeze-thaw cycles.

### Specificity:

Rock-1 (T298) polyclonal antibody detects endogenous levels of Rock-1 protein.

### DATA:



Western blot (WB) analysis of Rock-1 (T298) pAb at 1:500 dilution

Lane1:HEK293T whole cell lysate(40ug)

Lane2:HCT116 whole cell lysate(40ug)

Lane3:Myla2059 whole cell lysate(40ug)

Lane4:HuT78 whole cell lysate(40ug)

Lane5:K562 whole cell lysate(40ug)

### Note:

For research use only, not for use in diagnostic procedure.

### Bioworld Technology, Inc.

Add: 1660 South Highway 100, Suite 500 St. Louis Park, MN 55416, USA.

Email: [info@bioworld.com](mailto:info@bioworld.com)

Tel: 6123263284

Fax: 6122933841

### Bioworld technology, co. Ltd.

Add: No 9, weidi road Qixia District Nanjing, 210046, P. R. China.

Email: [info@biogot.com](mailto:info@biogot.com)

Tel: 0086-025-68037686

Fax: 0086-025-68035151