

## RHOBTB3 (L365) polyclonal antibody

Catalog: BS9159

Host: Rabbit

Reactivity: Human,Rat

### BackGround:

The Rho subfamily of Ras-related GTPases controls multiple aspects of cell function, including cytoskeletal rearrangement, nuclear signaling and cell growth. RHOBTB1 (Rho-related BTB domain-containing protein 1) and RHOBTB3 (Rho-related BTB domain-containing protein 3) each contain two BTB (POZ) domains and belong to the RhoBTB subfamily of Rho GTPases. Members of the RhoBTB subfamily are evolutionarily conserved and are characterized by a proline-rich region, a GTPase domain and two tandem BTB repeats. While both RHOBTB1 and RHOBTB3 are expressed ubiquitously, RHOBTB1 is found at high levels in placenta, stomach, testis, kidney and skeletal muscle, whereas RHOBTB3 is found at high levels in neural and cardiac tissues.

### Product:

Rabbit IgG, 1mg/ml in PBS with 0.02% sodium azide, 50% glycerol, pH7.2

### Molecular Weight:

~ 69 kDa

### Swiss-Prot:

O94955

### Purification&Purity:

The antibody was affinity-purified from rabbit antiserum by affinity-chromatography using epitope-specific immunogen and the purity is > 95% (by SDS-PAGE).

### Applications:

WB: 1:500~1:1000

IHC: 1:50~1:200

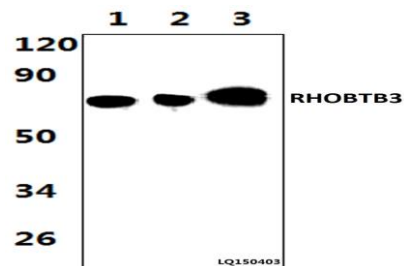
### Storage&Stability:

Store at 4 °C short term. Aliquot and store at -20 °C long term. Avoid freeze-thaw cycles.

### Specificity:

RHOBTB3 (L365) polyclonal antibody detects endogenous levels of RHOBTB3 protein.

### DATA:



Western blot (WB) analysis of RHOBTB3 (L365) polyclonal antibody

at 1:1000 dilution Lane1:HKE293T whole cell lysate(56ug)

Lane2:MCF-7 whole cell lysate(48ug) Lane3:The Pancreas tissue

lysate of Rat(43ug)

### Note:

For research use only, not for use in diagnostic procedure.

### Bioworld Technology, Inc.

Add: 1660 South Highway 100, Suite 500 St. Louis Park, MN 55416, USA.

Email: [info@bioworld.com](mailto:info@bioworld.com)

Tel: 6123263284

Fax: 6122933841

### Bioworld technology, co. Ltd.

Add: No 9, weidi road Qixia District Nanjing, 210046, P. R. China.

Email: [info@biogot.com](mailto:info@biogot.com)

Tel: 0086-025-68037686

Fax: 0086-025-68035151