

TGF α polyclonal antibody

Catalog: BS91337

Host: Rabbit

Reactivity: Human

BackGround:

Transforming growth factor- α (TGF α) is an acid- and heat-stable 50 amino acid protein originally found in rodents and humans. TGF α is 33% homologous at the amino acid level to epidermal growth factor (EGF). TGF α binds to the EGF receptor, mediates tyrosine phosphorylation of the receptor and promotes anchorage-independent growth of normal rat fibroblasts in soft agar in the presence of transforming growth factor- β . TGF α is secreted by a variety of transformed cells and tumors, embryonic cells and some normal adult cells. TGF α bioactivity has been found in the urine of cancer patients. It has been suggested that it may act as an autocrine growth factor for the induction or maintenance of malignancy.

Product:

Rabbit IgG, 1mg/ml in PBS with 0.02% sodium azide, 50% glycerol, pH7.2

Molecular Weight:

17 kDa

Swiss-Prot:

P01135(Human)

Purification&Purity:

ProA affinity purified

Applications:

WB:1:500

ICC:1:50-1:200

IHC:1:50-1:200

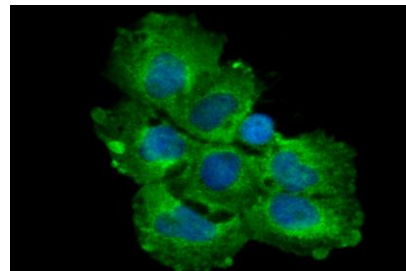
Storage&Stability:

Store at +4 °C after thawing. Aliquot store at -20 °C or -80 °C. Avoid repeated freeze / thaw cycles.

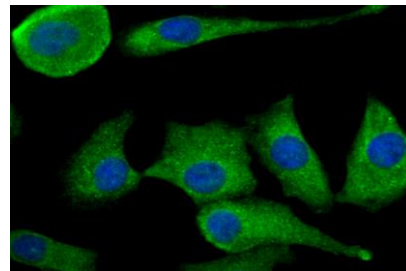
Specificity:

TGF α polyclonal antibody detects endogenous levels of TGF α protein.

DATA:



ICC staining TGF alpha in A431 cells (green). The nuclear counter stain is DAPI (blue). Cells were fixed in paraformaldehyde, permeabilised with 0.25% Triton X100/PBS.



ICC staining TGF alpha in A549 cells (green). The nuclear counter stain is DAPI (blue). Cells were fixed in paraformaldehyde, permeabilised with 0.25% Triton X100/PBS.

Note:

For research use only, not for use in diagnostic procedure.

Bioworld Technology, Inc.

Add: 1660 South Highway 100, Suite 500 St. Louis Park, MN 55416, USA.

Email: info@bioworld.com

Tel: 6123263284

Fax: 6122933841

Bioworld technology, co. Ltd.

Add: No 9, weidi road Qixia District Nanjing, 210046, P. R. China.

Email: info@biogot.com

Tel: 0086-025-68037686

Fax: 0086-025-68035151