

TGFBI polyclonal antibody

Catalog: BS91336

Host: Rabbit

Reactivity: Human, Mouse, Rat

BackGround:

Binds to type I, II, and IV collagens. This adhesion protein may play an important role in cell-collagen interactions. In cartilage, may be involved in endochondral bone formation. Highly expressed in the corneal epithelium.

Product:

Rabbit IgG, 1mg/ml in PBS with 0.02% sodium azide, 50% glycerol, pH7.2

Molecular Weight:

72 kDa

Swiss-Prot:

Q15582(Human) P82198(Mouse)

Purification&Purity:

ProA affinity purified

Applications:

WB:1:500-1:2,000

IHC:1:50-1:200

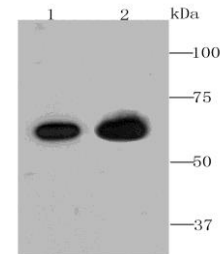
Storage&Stability:

Store at +4 °C after thawing. Aliquot store at -20 °C or -80 °C. Avoid repeated freeze / thaw cycles.

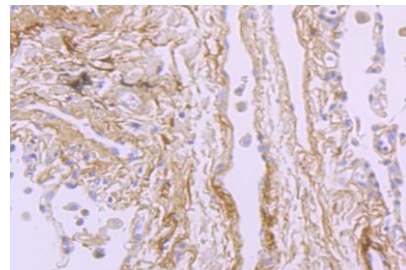
Specificity:

TGFBI polyclonal antibody detects endogenous levels of TGFBI protein.

DATA:



Western blot analysis of TGFBI on mouse colon (1) and mouse eye (2) tissue lysate using anti-TGFBI antibody at 1/1,000 dilution.



Immunohistochemical analysis of paraffin-embedded human lung cancer tissue using anti-TGFBI antibody. Counter stained with hematoxylin.

Note:

For research use only, not for use in diagnostic procedure.

Bioworld Technology, Inc.

Add: 1660 South Highway 100, Suite 500 St. Louis Park, MN 55416, USA.

Email: info@bioworld.com

Tel: 6123263284

Fax: 6122933841

Bioworld technology, co. Ltd.

Add: No 9, weidi road Qixia District Nanjing, 210046, P. R. China.

Email: info@biogot.com

Tel: 0086-025-68037686

Fax: 0086-025-68035151