

## STAT5A/B polyclonal antibody

Catalog: BS91289

Host: Rabbit

Reactivity: Human, Mouse, Rat

### BackGround:

Stat5 (Signal Transducers and Activators of Transcription 5) is important in regulating T cell functions involving the receptors for Interleukin-2 (IL-2). IL-2 stimulates the rapid phosphorylation of both serine and tyrosine residues of Stat5a and Stat5b in human T lymphocytes and in several IL-2-responsive lymphocytic cell lines. IL-2 differentially induces serine phosphorylation of Stat5a and Stat5b on Ser726 and Ser731, respectively. Stat5b is preferentially phosphorylated and displays more protracted serine phosphorylation kinetics than Stat5a. Both the acid-rich region and the COOH terminus of IL-2R $\beta$  can independently mediate IL-2-induced Stat 5a/b serine phosphorylation, suggesting that Stat5a/b serine phosphorylation occurs at a postreceptor level. Stat5a is phosphorylated on Tyr694 in a prolactin-sensitive manner, whereas serine phosphorylation is constitutive. Activation of Stat5 by IL-2 may help govern the biological effects of IL-2 during the immune response.

### Product:

Rabbit IgG, 1mg/ml in PBS with 0.02% sodium azide, 50% glycerol, pH7.2

### Molecular Weight:

90 kDa

### Swiss-Prot:

P42229(Human) P51692(Human) P42230(Mouse)  
P42232(Mouse) P52632(Rat) Q62771(Rat)

### Purification&Purity:

ProA affinity purified

### Applications:

WB:1:1,000-1:2,000

ICC:1:50-1:200

IHC:1:50-1:200

FC:1:50-1:100

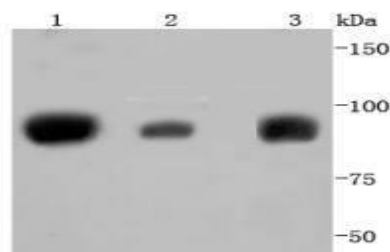
### Storage&Stability:

Store at +4 °C after thawing. Aliquot store at -20 °C or -80 °C. Avoid repeated freeze / thaw cycles.

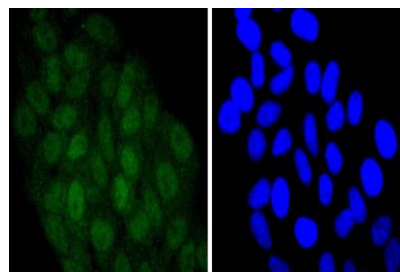
### Specificity:

STAT5A/B polyclonal antibody detects endogenous levels of STAT5A/B protein.

### DATA:



Western blot analysis of STAT5A+B on different lysates using anti-STAT5A+B antibody at 1/1,000 dilution. Positive control: Lane 1: K562 Lane 2: Jurkat Lane 3: PC-12



ICC staining STAT5A+B in HepG2 cells (green). The nuclear counter stain is DAPI (blue). Cells were fixed in paraformaldehyde, permeabilised with 0.25% Triton X100/PBS.

### Note:

For research use only, not for use in diagnostic procedure.

### Bioworld Technology, Inc.

Add: 1660 South Highway 100, Suite 500 St. Louis Park, MN 55416, USA.

Email: [info@bioworld.com](mailto:info@bioworld.com)

Tel: 6123263284

Fax: 6122933841

### Bioworld technology, co. Ltd.

Add: No 9, weidi road Qixia District Nanjing, 210046, P. R. China.

Email: [info@biogot.com](mailto:info@biogot.com)

Tel: 0086-025-68037686

Fax: 0086-025-68035151