

STAT5a polyclonal antibody

Catalog: BS91288

Host: Rabbit

Reactivity: Human, Mouse, Rat

BackGround:

Signal transducer and activator of transcription 5A (Stat5a) and Stat5b, which share 96% homology, undergo receptor tyrosine kinase or G protein-coupled receptor-dependent phosphorylation in response to cytokines or growth factors, and then form homo- or heterodimers that translocate to the nucleus, where they initiate transcription. Activation of Stat5a via IL-2, IL-3, IL-7/ GM-CSF, erythropoietin, thrombopoietin and growth hormones influences proliferation, differentiation and apoptosis in lymphohematopoietic cells. Phosphorylation of Stat5a at Ser127/Ser128 and Ser779 are contingent on ErbB-4-mediated activation of Stat5a. Activation of Stat5b via IL-2, IL-4, CSF-1 and growth hormones influences TCR signaling, apoptosis, adult mammary gland development and sexual dimorphism of liver gene expression. Stat5b is the major liver-expressed Stat5 form that has been shown to fuse with the retinoid acid receptor gene in acute promyelocytic leukemias (APLL). Stat5a/b null mice have severely impaired lymphoid development and differentiation.

Product:

Rabbit IgG, 1mg/ml in PBS with 0.02% sodium azide, 50% glycerol, pH7.2

Molecular Weight:

92 kDa

Swiss-Prot:

P42229(Human) P42230(Mouse) Q62771(Rat)

Purification&Purity:

ProA affinity purified

Applications:

WB:1:1,000-1:2,000

ICC:1:50-1:200

IHC:1:50-1:200

FC:1:50-1:100

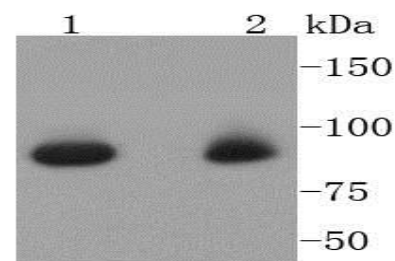
Storage&Stability:

Store at +4 °C after thawing. Aliquot store at -20 °C or -80 °C. Avoid repeated freeze / thaw cycles.

Specificity:

STAT5a polyclonal antibody detects endogenous levels of STAT5a protein.

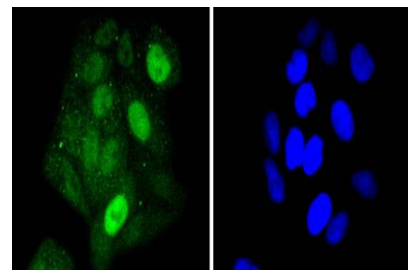
DATA:



Western blot analysis of STAT5a on different lysates using anti-STAT5a antibody at 1/1,000 dilution. Positive control:

Lane 1: Hela

Lane 2: K562



ICC staining STAT5a in Hela cells (green). The nuclear counter stain is DAPI (blue). Cells were fixed in paraformaldehyde, permeabilised with 0.25% Triton X100/PBS.

Note:

For research use only, not for use in diagnostic procedure.

Bioworld Technology, Inc.

Add: 1660 South Highway 100, Suite 500 St. Louis Park, MN 55416, USA.

Email: info@bioworld.com

Tel: 6123263284

Fax: 6122933841

Bioworld technology, co. Ltd.

Add: No 9, weidi road Qixia District Nanjing, 210046, P. R. China.

Email: info@biogot.com

Tel: 0086-025-68037686

Fax: 0086-025-68035151