

SMURF 2 polyclonal antibody

Catalog: BS91260

Host: Rabbit

Reactivity: Human

BackGround:

Smurf1 and Smurf2 (SMAD ubiquitination regulatory factor-1 and 2) are members of the Hect family of proteins, which also includes the ubiquitin (Ub) E3-type ligases Nedd3 and E6-AP. E3 ligases are involved in the enzymatic reactions of the Ub conjugating pathway, which targets proteins for degradation by the 26S proteasome. Within the Ub pathway, the E3 ligases specifically catalyze the transfer of Ub from the Ub-conjugating enzymes to the individual protein substrate. As an E3 ligase, Smurf1 selectively interacts with receptor-regulated SMADs specific to the BMP pathway in order to trigger their ubiquitination and degradation. Smurf2 interacts with receptor-activated Smads (R-Smads), including Smad1, Smad2, and Smad3, but not Smad4. Although Smurf2 localizes to the nucleus, binding to Smad7 induces its export and its recruitment to the activated TGF β receptor, where it causes degradation of Smad7.

Product:

Rabbit IgG, 1mg/ml in PBS with 0.02% sodium azide, 50% glycerol, pH7.2

Molecular Weight:

86 kDa

Swiss-Prot:

Q9HAU4(Human)

Purification&Purity:

ProA affinity purified

Applications:

WB:1:500

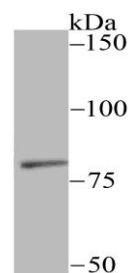
Storage&Stability:

Store at +4 °C after thawing. Aliquot store at -20 °C or -80 °C. Avoid repeated freeze / thaw cycles.

Specificity:

SMURF 2 polyclonal antibody detects endogenous levels of SMURF 2 protein.

DATA:



Western blot analysis of SMURF 2 on A431 cell using anti-SMURF 2 antibody at 1/200 dilution.

Note:

For research use only, not for use in diagnostic procedure.

Bioworld Technology, Inc.

Add: 1660 South Highway 100, Suite 500 St. Louis Park, MN 55416, USA.

Email: info@bioworld.com

Tel: 6123263284

Fax: 6122933841

Bioworld technology, co. Ltd.

Add: No 9, weidi road Qixia District Nanjing, 210046, P. R. China.

Email: info@biogot.com

Tel: 0086-025-68037686

Fax: 0086-025-68035151