

SFRP1 polyclonal antibody

Catalog: BS91232

Host: Rabbit

Reactivity: Human, Mouse, Rat

Background:

Soluble frizzled-related proteins (sFRPS) function as modulators of Wnt signaling through direct interaction with Wnts. They have a role in regulating cell growth and differentiation in specific cell types. SFRP1 decreases intracellular beta-catenin levels. Has antiproliferative effects on vascular cells, in vitro and in vivo, and can induce, in vivo, an angiogenic response. In vascular cell cycle, delays the G1 phase and entry into the S phase. In kidney development, inhibits tubule formation and bud growth in metaneproi. Inhibits WNT1/WNT4-mediated TCF-dependent transcription.

Product:

Rabbit IgG, 1mg/ml in PBS with 0.02% sodium azide, 50% glycerol, pH7.2

Molecular Weight:

35 kDa

Swiss-Prot:

Q8N474(Human) Q8C4U3(Mouse) Q9R168(Rat)

Purification&Purity:

Peptide affinity purified

Applications:

WB:1:500-1:1,000

ICC:1:100-1:500

IHC:1:50-1:200

FC:1:50-1:100

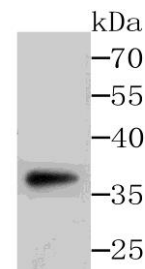
Storage&Stability:

Store at +4 °C after thawing. Aliquot store at -20 °C or -80 °C. Avoid repeated freeze / thaw cycles.

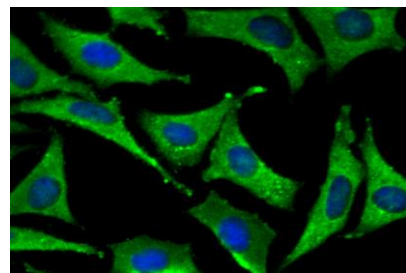
Specificity:

SFRP1 polyclonal antibody detects endogenous levels of SFRP1 protein.

DATA:



Western blot analysis of SFRP1 on SH-SY-5Y cells lysates using anti-SFRP1 antibody at 1/500 dilution.



ICC staining SFRP1 in SH-SY-5Y cells (green). The nuclear counter stain is DAPI (blue). Cells were fixed in paraformaldehyde, permeabilised with 0.25% Triton X100/PBS.

Note:

For research use only, not for use in diagnostic procedure.

Bioworld Technology, Inc.

Add: 1660 South Highway 100, Suite 500 St. Louis Park, MN 55416, USA.

Email: info@bioworld.com

Tel: 6123263284

Fax: 6122933841

Bioworld technology, co. Ltd.

Add: No 9, weidi road Qixia District Nanjing, 210046, P. R. China.

Email: info@biogot.com

Tel: 0086-025-68037686

Fax: 0086-025-68035151