

## PDPK1 polyclonal antibody

Catalog: BS91048

Host: Rabbit

Reactivity: Human, Mouse, Rat

### BackGround:

PDPK1 (3-phosphoinositide dependent protein kinase 1), also known as PDK1, PDPK2, PDPK2P or PRO0461, is 556 amino acid ubiquitously expressed protein that localizes to the cell membrane, cytoplasm and nucleus. Acting as a master kinase, PDPK1 phosphorylates and activates a subgroup of the AGC family of protein kinases. PDPK1 is involved in mediating signal transduction for controlling proliferation, survival, and growth of developing pancreatic beta cells, regulating Ca<sup>2+</sup> uptake and Ca<sup>2+</sup>-activated K<sup>+</sup> channels of mast cells, regulation of chemotaxis and motility of vascular endothelial cells, cardiac homeostasis, and thymocyte development. Belonging to the protein kinase superfamily, PDPK1 contains a PH domain, which play an essential role in homodimerization, localization and nuclear import of PDPK1, and a protein kinase domain. PDPK1 exists as five alternatively spliced isoforms and is encoded by a gene located on human chromosome 16p13.3.

### Product:

Rabbit IgG, 1mg/ml in PBS with 0.02% sodium azide, 50% glycerol, pH7.2

### Molecular Weight:

63/48 kDa

### Swiss-Prot:

O15530(Human) Q9Z2A0(Mouse) O55173(Rat)

### Purification&Purity:

ProA affinity purified

### Applications:

WB:1:1,000-1:2,000

ICC:1:100-1:500

IHC:1:50-1:200

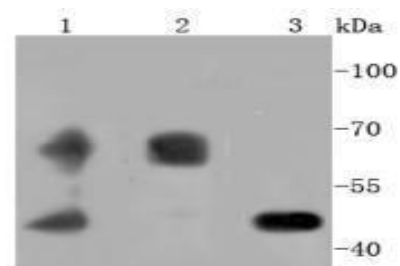
### Storage&Stability:

Store at +4 °C after thawing. Aliquot store at -20 °C or -80 °C. Avoid repeated freeze / thaw cycles.

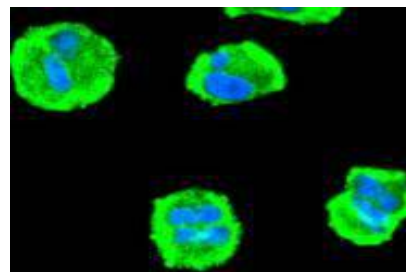
### Specificity:

PDPK1 polyclonal antibody detects endogenous levels of PDPK1 protein.

### DATA:



Western blot analysis of PDPK1 on different lysates using anti-PDPK1 antibody at 1/1,000 dilution. Positive control: Lane 1: 293T Lane 2: PC-12 Lane 3: HL-60



ICC staining PDPK1 in HeLa cells (green). The nuclear counter stain is DAPI (blue). Cells were fixed in paraformaldehyde, permeabilised with 0.25% Triton X100/PBS.

### Note:

For research use only, not for use in diagnostic procedure.

### Bioworld Technology, Inc.

Add: 1660 South Highway 100, Suite 500 St. Louis Park, MN 55416, USA.

Email: [info@bioworld.com](mailto:info@bioworld.com)

Tel: 6123263284

Fax: 6122933841

### Bioworld technology, co. Ltd.

Add: No 9, weidi road Qixia District Nanjing, 210046, P. R. China.

Email: [info@biogot.com](mailto:info@biogot.com)

Tel: 0086-025-68037686

Fax: 0086-025-68035151