

N-Cadherin polyclonal antibody

Catalog: BS90914

Host: Rabbit

Reactivity: Human, Mouse

BackGround:

The cadherins are a large family of cell adhesion molecules involved in calcium-dependent recognition and adhesion events. The cadherin subfamily includes N-, P-, B-, and E- cadherins, and other members. Recent studies indicate that cancer cells have up-regulated N-cadherin in addition to loss of E-cadherin. N-cadherin cooperates with the FGF receptor, leading to overexpression of MMP-9 and cellular invasion. N-Cadherin is commonly found in cancer cells and provides a mechanism for trans-endothelial migration. When a cancer cell adheres to the endothelial cells of a blood vessel it up-regulates the src kinase pathway, which phosphorylates beta-catenins attached to both N-cadherin (this protein) and E-cadherins.

Product:

Rabbit IgG, 1mg/ml in PBS with 0.02% sodium azide, 50% glycerol, pH7.2

Molecular Weight:

140 kDa

Swiss-Prot:

P19022(Human) P15116(Mouse)

Purification&Purity:

Peptide affinity purified

Applications:

WB:1:500

ICC:1:200

IHC:1:200

FC:1:50

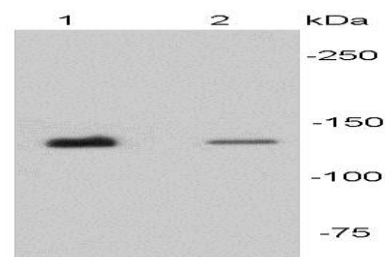
Storage&Stability:

Store at +4 °C after thawing. Aliquot store at -20 °C. Avoid repeated freeze / thaw cycles.

Specificity:

N-Cadherin polyclonal antibody detects endogenous levels of N-Cadherin protein.

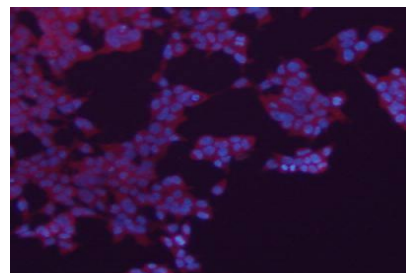
DATA:



Western blot analysis of N-cadherin on different tissue lysates using anti-N-cadherin antibody at 1/500 dilution. Positive control:

Lane 1: Mouse heart

Lane 2 : Human heart



ICC staining N-Cadherin in 293 cells (red). The nuclear counter stain is DAPI (blue). Cells were fixed in paraformaldehyde, permeabilised with 0.25% Triton X100/PBS.

Note:

For research use only, not for use in diagnostic procedure.

Bioworld Technology, Inc.

Add: 1660 South Highway 100, Suite 500 St. Louis Park, MN 55416, USA.

Email: info@bioworld.com

Tel: 6123263284

Fax: 6122933841

Bioworld technology, co. Ltd.

Add: No 9, weidi road Qixia District Nanjing, 210046, P. R. China.

Email: info@biogot.com

Tel: 0086-025-68037686

Fax: 0086-025-68035151