

Ikk α polyclonal antibody

Catalog: BS90696

Host: Rabbit

Reactivity: Human, mouse, rat

BackGround:

Serine kinase that plays an essential role in the NF-kappa-B signaling pathway which is activated by multiple stimuli such as inflammatory cytokines, bacterial or viral products, DNA damages or other cellular stresses. It acts as part of the canonical IKK complex in the conventional pathway of NF-kappa-B activation and phosphorylates inhibitors of NF-kappa-B on serine residues. These modifications allow polyubiquitination of the inhibitors and subsequent degradation by the proteasome. In turn, free NF-kappa-B is translocated into the nucleus and activates the transcription of hundreds of genes involved in immune response, growth control, or protection against apoptosis.

Product:

Rabbit IgG, 1mg/ml in PBS with 0.02% sodium azide, 50% glycerol, pH7.2

Molecular Weight:

85 kDa

Swiss-Prot:

O15111

Purification&Purity:

Peptide affinity purified

Applications:

WB:1:500

ICC:1:200

IHC:1:200

FC:1:100-1:200

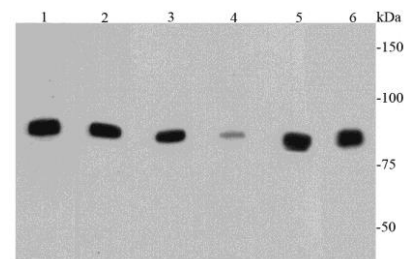
Storage&Stability:

Store at +4 °C after thawing. Aliquot store at -20 °C or -80 °C. Avoid repeated freeze / thaw cycles.

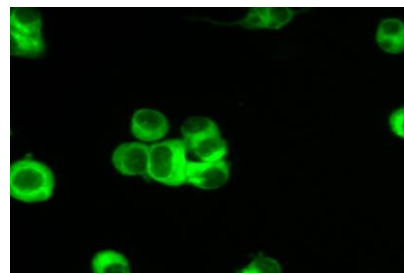
Specificity:

Ikk α polyclonal antibody detects endogenous levels of Ikk α protein.

DATA:



Western blot analysis of IKK alpha on different cell lysates using anti-IKK alpha antibody at 1/500 dilution. Positive control: Lane 1: Hela Lane 2: HepG2 Lane 3: Raji Lane 4: NIH/3T3 Lane 5: PC12 Lane 6: Jurkat



ICC staining IKK alpha in N2A cells (green). Cells were fixed in para-formaldehyde, permeabilised with 0.25% Triton X100/PBS.

Note:

For research use only, not for use in diagnostic procedure.

Bioworld Technology, Inc.

Add: 1660 South Highway 100, Suite 500 St. Louis Park, MN 55416, USA.

Email: info@bioworld.com

Tel: 6123263284

Fax: 6122933841

Bioworld technology, co. Ltd.

Add: No 9, weidi road Qixia District Nanjing, 210046, P. R. China.

Email: info@biogot.com

Tel: 0086-025-68037686

Fax: 0086-025-68035151