

CD68 polyclonal antibody

Catalog: BS90255

Host: Rabbit

Reactivity: Human, Mouse, Rat

BackGround:

CD68, also called Scavenger Receptor D1 (SR-D1) or macroscialin in mouse, is a 110 kDa type I transmembrane glycoprotein that belongs to the LAMP family of molecules. It contains a 300 amino acid (aa) extracellular region that is rich in threonine and serine, a likely attachment site for multiple carbohydrates. Human CD68 shares 74% aa sequence identity to mouse CD68 in the extracellular region. CD68 is found on monocytes and macrophages and serves as a scavenger receptor for oxidized LDL.

Product:

Rabbit IgG, 1mg/ml in PBS with 0.02% sodium azide, 50% glycerol, pH7.2

Molecular Weight:

37 kDa

Swiss-Prot:

| | | |
|----------------------|---------------|-----|
| P34810(Human) | P31996(Mouse) | En- |
| trezGene:287435(Rat) | | |

Purification&Purity:

ProA affinity purified

Applications:

WB:1:1,000

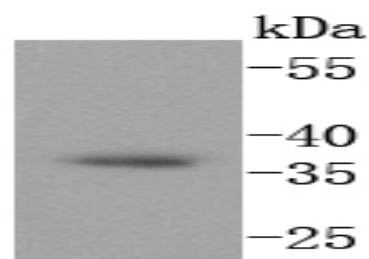
Storage&Stability:

Store at +4 °C after thawing. Aliquot store at -20 °C or -80 °C. Avoid repeated freeze / thaw cycles.

Specificity:

CD68 polyclonal antibody detects endogenous levels of CD68 protein.

DATA:



Western blot analysis of CD68 on SH-SY-5Y cells lysates using anti-CD68 antibody at 1/1,000 dilution.

Note:

For research use only, not for use in diagnostic procedure.

Bioworld Technology, Inc.

Add: 1660 South Highway 100, Suite 500 St. Louis Park, MN 55416, USA.

Email: info@bioworld.com

Tel: 6123263284

Fax: 6122933841

Bioworld technology, co. Ltd.

Add: No 9, weidi road Qixia District Nanjing, 210046, P. R. China.

Email: info@biogot.com

Tel: 0086-025-68037686

Fax: 0086-025-68035151