

CD40 polyclonal antibody

Catalog: BS90245

Host: Rabbit

Reactivity: Human, Mouse, Rat

Background:

Resting B cells can be activated and clonally expanded into antibody-producing cells in response to a combination of cell contact and soluble signals provided by primed helper T (Th) cells. A receptor ligand pair central to the transmission of this signal is CD40, expressed on the surface of B cells, together with CD40L, expressed on activated T cells. In the presence of such stimulus, IL-4 and IL-13 are capable of triggering immunoglobulin class switching and secretion of IgE. B cells are sensitive to these cytokines only subsequent to CD40/CD40L-driven DNA synthesis. A downstream mediator of the CD40 signaling pathway, designated CRAF, is a member of an expanding family of proteins that contain a conserved cysteine- and histidine-rich RING finger motif.

Product:

Rabbit IgG, 1mg/ml in PBS with 0.02% sodium azide, 50% glycerol, pH7.2

Molecular Weight:

Predicted band size 31kDa

Swiss-Prot:

P25942(Human) P27512(Mouse)

Purification&Purity:

Protein affinity purified.

Applications:

WB:1:500-1:1,000

ICC:1:50-1:200

IHC:1:50-1:200

FC:1:50-1:100

Storage&Stability:

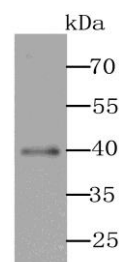
Store at +4 °C after thawing. Aliquot store at -20 °C. Avoid

repeated freeze / thaw cycles.

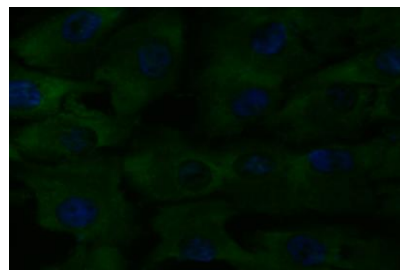
Specificity:

CD40 polyclonal antibody detects endogenous levels of CD40 protein.

DATA:



Western blot analysis of CD40 on Daudi cell lysate using anti-CD40 antibody at 1/2,000 dilution.



ICC staining CD40 in MG-63 cells (green). The nuclear counter stain is DAPI (blue). Cells were fixed in paraformaldehyde, permeabilised with 0.25% Triton X100/PBS.

Note:

For research use only, not for use in diagnostic procedure.

Bioworld Technology, Inc.

Add: 1660 South Highway 100, Suite 500 St. Louis Park, MN 55416, USA.

Email: info@bioworld.com

Tel: 6123263284

Fax: 6122933841

Bioworld technology, co. Ltd.

Add: No 9, weidi road Qixia District Nanjing, 210046, P. R. China.

Email: info@biogot.com

Tel: 0086-025-68037686

Fax: 0086-025-68035151