

CD3 epsilon polyclonal antibody

Catalog: BS90230

Host: Rabbit

Reactivity: Human, Mouse

BackGround:

CD3 is composed of five invariant polypeptide chains that associate to form three dimers. The five invariant chains of CD3 are labeled gamma, delta, epsilon, zeta, and eta. Each of these polypeptides contains at least one immunoreceptor tyrosine-based activation motif (ITAM) These chains associate with the T cell receptor (TCR) and the ζ -chain to generate an activation signal in T lymphocytes.

Product:

Rabbit IgG, 1mg/ml in PBS with 0.02% sodium azide, 50% glycerol, pH7.2

Molecular Weight:

23 kDa

Swiss-Prot:

P07766(Human) P22646(Mouse)

Purification&Purity:

Peptide affinity purified

Applications:

WB:1:1,000

ICC:1:200

IHC:1:200

FC:1:100-1:200

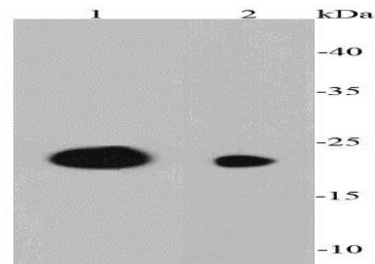
Storage&Stability:

Store at +4°C after thawing. Aliquot store at -20°C. Avoid repeated freeze / thaw cycles.

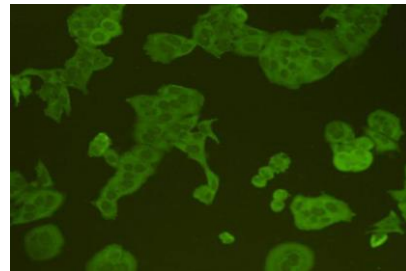
Specificity:

CD3 epsilon polyclonal antibody detects endogenous levels of CD3 epsilon protein.

DATA:



Western blot analysis of CD3E on different cell lysates using anti-CD3E antibody at 1/1000 dilution.



ICC staining CD3E in HeLa cells (green). Cells were fixed in paraformaldehyde, permeabilised with 0.25% Triton X100/PBS.

Note:

For research use only, not for use in diagnostic procedure.

Bioworld Technology, Inc.

Add: 1660 South Highway 100, Suite 500 St. Louis Park, MN 55416, USA.

Email: info@bioworld.com

Tel: 6123263284

Fax: 6122933841

Bioworld technology, co. Ltd.

Add: No 9, weidi road Qixia District Nanjing, 210046, P. R. China.

Email: info@biogol.com

Tel: 0086-025-68037686

Fax: 0086-025-68035151