

RALB polyclonal antibody

Catalog: BS8542

Host: Rabbit

Reactivity: Human, Mouse, Rat

BackGround:

Ral A and Ral B constitute a distinct subfamily of Ras-related GTPases (i.e., GDP/GTP binding proteins). Ral proteins are activated by a unique nucleotide exchange factor, Ral GDS, and deactivated by a distinct GTPase-activating protein. Unlike Ras proteins, Ral A and Ral B fail to induce transformed foci when activated variants are expressed in various recipient cells. A potential downstream target of Ral, designated Ral BP-1, has been shown to contain a Rho-GTPase-activating domain. This Rho-GTPase-activating domain interacts preferentially with the Rho family member Cdc42. A Ras/Ral signaling pathway has been reported to mediate phospholipase D (PLD) activation by v-Src, thus indicating PLD as another downstream target of Ral A.

Product:

Rabbit IgG, 1mg/ml in PBS with 0.02% sodium azide, 50% glycerol, pH7.2

Molecular Weight:

~ 25 kDa

Swiss-Prot:

P11234

Purification&Purity:

The antibody was affinity-purified from rabbit antiserum by affinity-chromatography using epitope-specific immunogen and the purity is > 95% (by SDS-PAGE).

Applications:

WB: 1:500~1:2000

IHC: 1:50~1:200

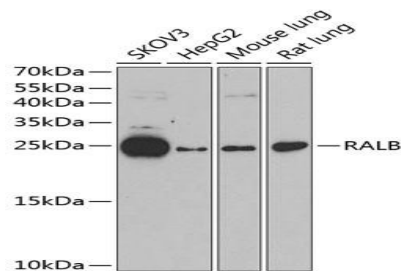
Storage&Stability:

Store at 4 °C short term. Aliquot and store at -20 °C long term. Avoid freeze-thaw cycles.

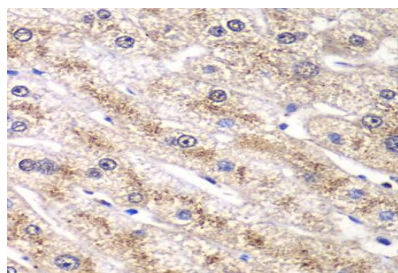
Specificity:

RALB polyclonal antibody detects endogenous levels of RALB protein.

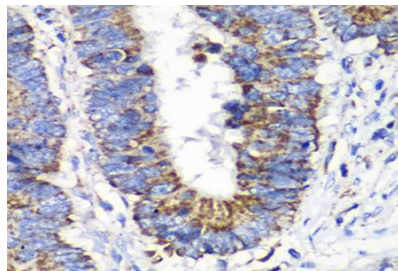
DATA:



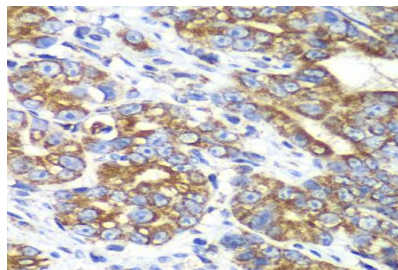
Western blot analysis of extracts of various cell lines, using RALB antibody at 1:1000 dilution.



Immunohistochemistry of paraffin-embedded human liver damage using RALB antibody at dilution of 1:100 (40x lens).



Immunohistochemistry of paraffin-embedded human colon carcinoma using RALB antibody at dilution of 1:100 (40x lens).



Immunohistochemistry of paraffin-embedded human gastric cancer us-

Bioworld Technology, Inc.

Add: 1660 South Highway 100, Suite 500 St. Louis Park, MN 55416, USA.

Email: info@bioworld.com

Tel: 6123263284

Fax: 6122933841

Bioworld technology, co. Ltd.

Add: No 9, weidi road Qixia District Nanjing, 210046, P. R. China.

Email: info@biogot.com

Tel: 0086-025-68037686

Fax: 0086-025-68035151



PRODUCT DATA SHEET

Bioworld Technology, Inc.

ing RALB antibody at dilution of 1:100 (40x lens).

For research use only, not for use in diagnostic procedure.

Note:

Bioworld Technology, Inc.

Add: 1660 South Highway 100, Suite 500 St. Louis Park,
MN 55416, USA.

Email: info@bioworld.com

Tel: 6123263284

Fax: 6122933841

Bioworld technology, co. Ltd.

Add: No 9, weidi road Qixia District Nanjing, 210046,
P. R. China.

Email: info@biogot.com

Tel: 0086-025-68037686

Fax: 0086-025-68035151