

## TALDO1 polyclonal antibody

Catalog: BS8420

Host: Rabbit

Reactivity: Human, Mouse

### BackGround:

Proper cell growth, differentiation and survival relies on a series of enzymes involved in complex redox and metabolic pathways. One of these enzymes, Transaldolase, contributes to the generation of NADPH in the nonoxidative phase of the pentose phosphate pathway (PPP) and is important for maintaining metabolite balance. In conjunction with several other enzymes, Transaldolase works to maintain the mitochondrial transmembrane potential by producing both ribose-5-phosphate and NADPH for use in nucleic acid and lipid biosynthesis. The role of Transaldolase in the PPP of spermatozoa is of significant importance, as deficiencies in Transaldolase are directly related with male infertility due to loss of sperm structure and function. Mutations in the gene encoding Transaldolase are thought to play a role in multiple sclerosis and are the direct cause of hepatosplenomegaly and telangiectases of the skin.

### Product:

Rabbit IgG, 1mg/ml in PBS with 0.02% sodium azide, 50% glycerol, pH7.2

### Molecular Weight:

~ 38 kDa

### Swiss-Prot:

P37837

### Purification&Purity:

The antibody was affinity-purified from rabbit antiserum by affinity-chromatography using epitope-specific immunogen and the purity is > 95% (by SDS-PAGE).

### Applications:

WB: 1:500~1:2000

IF: 1:50~1:200

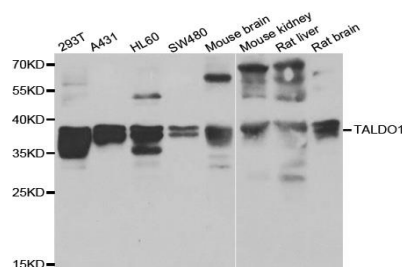
### Storage&Stability:

Store at 4 °C short term. Aliquot and store at -20 °C long term. Avoid freeze-thaw cycles.

### Specificity:

TALDO1 polyclonal antibody detects endogenous levels of TALDO1 protein.

### DATA:



WesternBlot (WB) analysis of TALDO1 polyclonal antibody

### Note:

For research use only, not for use in diagnostic procedure.

### Bioworld Technology, Inc.

Add: 1660 South Highway 100, Suite 500 St. Louis Park, MN 55416, USA.

Email: [info@bioworld.com](mailto:info@bioworld.com)

Tel: 6123263284

Fax: 6122933841

### Bioworld technology, co. Ltd.

Add: No 9, weidi road Qixia District Nanjing, 210046, P. R. China.

Email: [info@biogot.com](mailto:info@biogot.com)

Tel: 0086-025-68037686

Fax: 0086-025-68035151