

SRI polyclonal antibody

Catalog: BS8410

Host: Rabbit

Reactivity: Human, Mouse, Rat

BackGround:

Sorcin is a highly conserved protein, with 95% homology between hamster and human sorcin sequences. Sorcin has four putative Ca-binding domains, two of which exhibit strong homology to calmodulin "EF hand" motifs. Calcium binding directly to sorcin has been demonstrated by in vitro assays. Sorcin is closely related to members of calpain and sarcoplasmic Ca²⁺-binding protein subfamilies. Sorcin undergoes calcium-dependent translocation from the cytosol to cellular membranes. Sorcin binds to and modulates ryanodine receptors and is widely distributed including heart and brain tissues. At the subcellular level, sorcin localizes to T-tubule junctions of cardiac sarcoplasmic reticulum.

Product:

Rabbit IgG, 1mg/ml in PBS with 0.02% sodium azide, 50% glycerol, pH7.2

Molecular Weight:

~ 22 kDa

Swiss-Prot:

P30626

Purification&Purity:

The antibody was affinity-purified from rabbit antiserum by affinity-chromatography using epitope-specific immunogen and the purity is > 95% (by SDS-PAGE).

Applications:

WB 1:500 - 1:2000
IHC 1:50 - 1:200
IF 1:50 - 1:200

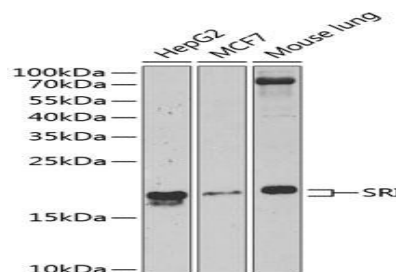
Storage&Stability:

Store at 4 °C short term. Aliquot and store at -20 °C long term. Avoid freeze-thaw cycles.

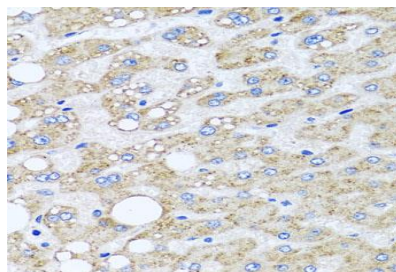
Specificity:

SRI polyclonal antibody detects endogenous levels of SRI protein.

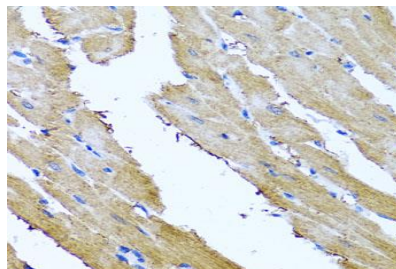
DATA:



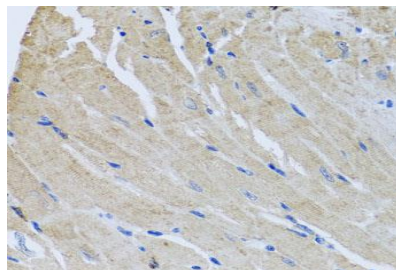
Immunohistochemistry of paraffin-embedded human liver injury using SRI antibody at dilution of 1:100 (x40 lens).



Immunohistochemistry of paraffin-embedded rat heart using SRI antibody at dilution of 1:100 (x40 lens).



Immunohistochemistry of paraffin-embedded mouse heart using SRI antibody at dilution of 1:100 (x40 lens).



Note:

For research use only, not for use in diagnostic procedure.

Bioworld Technology, Inc.

Add: 1660 South Highway 100, Suite 500 St. Louis Park, MN 55416, USA.

Email: info@bioworld.com

Tel: 6123263284

Fax: 6122933841

Bioworld technology, co. Ltd.

Add: No 9, weidi road Qixia District Nanjing, 210046, P. R. China.

Email: info@biogot.com

Tel: 0086-025-68037686

Fax: 0086-025-68035151



PRODUCT DATA SHEET

Bioworld Technology, Inc.

Bioworld Technology, Inc.

Add: 1660 South Highway 100, Suite 500 St. Louis Park,
MN 55416, USA.

Email: info@bioworld.com

Tel: 6123263284

Fax: 6122933841

Bioworld technology, co. Ltd.

Add: No 9, weidi road Qixia District Nanjing, 210046,
P. R. China.

Email: info@biogot.com

Tel: 0086-025-68037686

Fax: 0086-025-68035151