

SPTLC1 polyclonal antibody

Catalog: BS8409

Host: Rabbit

Reactivity: Human, Mouse, Rat

BackGround:

SPTLC1 (serine palmitoyltransferase 1), also known as LCB1, and SPTLC2 (serine palmitoyltransferase 2), also known as LCB2, together catalyze sphingolipid biosynthesis by converting L-serine and palmitoyl-CoA to 3-oxosphinganine, utilizing pyridoxal 5'-phosphate as a cofactor. Increases in transepidermal water loss triggers upregulation of serine palmitoyltransferase mRNA expression in humans. Deficiencies in wild type SPTLC1 and SPTLC2 can lead to hereditary sensory neuropathy, atopic eczema, and psoriasis.

Product:

Rabbit IgG, 1mg/ml in PBS with 0.02% sodium azide, 50% glycerol, pH7.2

Molecular Weight:

~ 53 kDa

Swiss-Prot:

O15269

Purification&Purity:

The antibody was affinity-purified from rabbit antiserum by affinity-chromatography using epitope-specific immunogen and the purity is > 95% (by SDS-PAGE).

Applications:

WB: 1:500~1:2000

IHC: 1:50~1:200

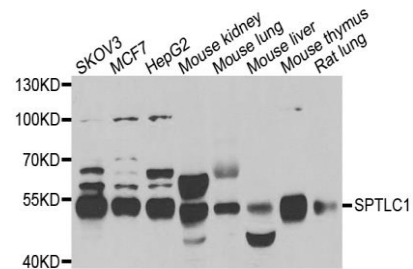
Storage&Stability:

Store at 4 °C short term. Aliquot and store at -20 °C long term. Avoid freeze-thaw cycles.

Specificity:

SPTLC1 polyclonal antibody detects endogenous levels of SPTLC1 protein.

DATA:



WesternBlot (WB) analysis of SPTLC1 polyclonal antibody

Note:

For research use only, not for use in diagnostic procedure.

Bioworld Technology, Inc.

Add: 1660 South Highway 100, Suite 500 St. Louis Park, MN 55416, USA.

Email: info@bioworld.com

Tel: 6123263284

Fax: 6122933841

Bioworld technology, co. Ltd.

Add: No 9, weidi road Qixia District Nanjing, 210046, P. R. China.

Email: info@biogot.com

Tel: 0086-025-68037686

Fax: 0086-025-68035151