

RBP2 polyclonal antibody

Catalog: BS8380

Host: Rabbit

Reactivity: Human, Mouse, Rat

Background:

Rb (retinoblastoma protein) is a potent transcriptional regulator that is directly involved with events such as entry into cell division and formation of heterochromatin. RBP2 (Retinoblastoma-binding protein 2), also known as RBBP2, JARID1A (Jumonji/ARID domain-containing protein 1A) or KDM5A, is a nuclear protein that belongs to the JARID1 histone demethylase family. Expressed ubiquitously, RBP2 functions as a histone demethylase that, in conjunction with other proteins, binds directly to the viral-binding domain of Rb, thereby regulating Rb-mediated cell proliferation events. In addition, RBP2 can bind to the Rb-interacting protein rhombotin-2 (LMO2) and, through this interaction, can indirectly modulate Rb activity. Via its demethylase activity, RBP2 can remove methyl residues from Histone H3, thus playing a crucial role in the histone code. RBP2 contains one ARID domain, three PHD-type zinc fingers, one JMJD domain and one JMJC domain through which it conveys its enzymatic activity. Multiple isoforms of RBP2 exist due to alternative splicing events.

Product:

Rabbit IgG, 1mg/ml in PBS with 0.02% sodium azide, 50% glycerol, pH7.2

Molecular Weight:

~ 16 kDa

Swiss-Prot:

P50120

Purification&Purity:

The antibody was affinity-purified from rabbit antiserum by affinity-chromatography using epitope-specific immunogen and the purity is > 95% (by SDS-PAGE).

Applications:

WB: 1:500~1:2000

IHC/IF: 1:50~1:200

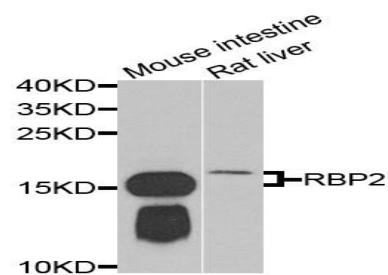
Storage&Stability:

Store at 4 °C short term. Aliquot and store at -20 °C long term. Avoid freeze-thaw cycles.

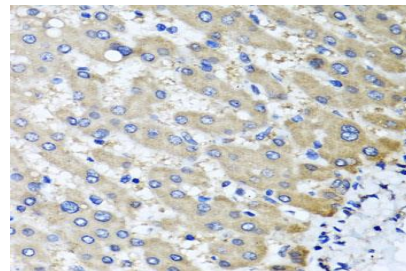
Specificity:

RBP2 polyclonal antibody detects endogenous levels of RBP2 protein.

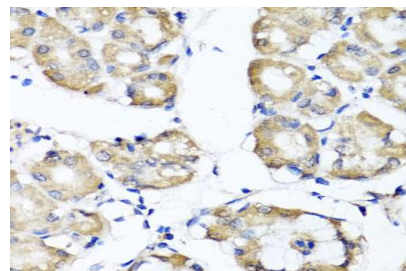
DATA:



Western blot analysis of extracts of various cells, using RBP2 antibody.



Immunohistochemistry of paraffin-embedded human liver injury using RBP2 antibody at dilution of 1:100 (x40 lens).



Immunohistochemistry of paraffin-embedded human gastric using RBP2 antibody at dilution of 1:100 (x40 lens).

Note:

For research use only, not for use in diagnostic procedure.

Bioworld Technology, Inc.

Add: 1660 South Highway 100, Suite 500 St. Louis Park, MN 55416, USA.

Email: info@bioworld.com

Tel: 6123263284

Fax: 6122933841

Bioworld technology, co. Ltd.

Add: No 9, weidi road Qixia District Nanjing, 210046, P. R. China.

Email: info@biogot.com

Tel: 0086-025-68037686

Fax: 0086-025-68035151



PRODUCT DATA SHEET

Bioworld Technology, Inc.

Bioworld Technology, Inc.

Add: 1660 South Highway 100, Suite 500 St. Louis Park,
MN 55416, USA.

Email: info@bioworld.com

Tel: 6123263284

Fax: 6122933841

Bioworld technology, co. Ltd.

Add: No 9, weidi road Qixia District Nanjing, 210046,
P. R. China.

Email: info@biogot.com

Tel: 0086-025-68037686

Fax: 0086-025-68035151