

## SPINT1 polyclonal antibody

Catalog: BS8196

Host: Rabbit

Reactivity: Human, Mouse, Rat

### Background:

Tissue damage, such as hepatic and renal injury, initiates hepatocyte growth factor activator (HGFAC)-mediated limited proteolytic activation of the inactive single-chain precursor form of HGF. Initially, HGFAC is produced as a precursor protein, which is activated by limited proteolysis and is neutralized by specific inhibitors known as HGF activator inhibitors, designated HAIs. HAIs belong to the Kunitz-type serine protease inhibitor family. HAIs target HGF activator and are involved in the regulation of proteolytic activation of HGF in injured tissues. Human HAI-1 transcript is expressed in various human tissues, such as adult placenta, kidney, pancreas, prostate and small intestine, and fetal kidney and lung. It translates into a 478 amino acid protein. The human HAI-2 gene maps to chromosome 19q13.1 and encodes a 252 amino acid protein, also designated human placental bikunin or kop (Kunitz domain containing protein over-expressed in pancreatic cancer). HAI-1 and HAI-2 are produced in membrane-associated forms, which are secreted as active, proteolytically truncated proteins.

### Product:

Rabbit IgG, 1mg/ml in PBS with 0.02% sodium azide, 50% glycerol, pH7.2

### Molecular Weight:

~ 70 kDa

### Swiss-Prot:

O43278

### Purification&Purity:

The antibody was affinity-purified from rabbit antiserum by affinity-chromatography using epitope-specific immunogen and the purity is > 95% (by SDS-PAGE).

### Applications:

WB: 1:500~1:2000

IHC/IF: 1:50~1:200

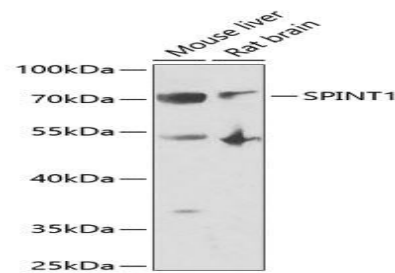
### Storage&Stability:

Store at 4 °C short term. Aliquot and store at -20 °C long term. Avoid freeze-thaw cycles.

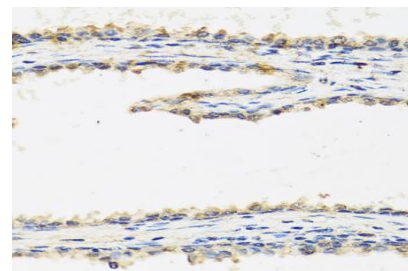
### Specificity:

SPINT1 polyclonal antibody detects endogenous levels of SPINT1 protein.

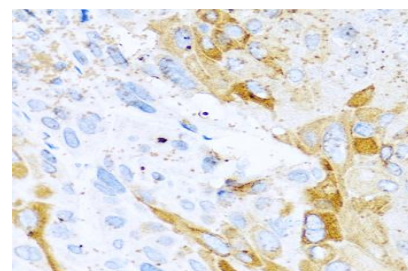
### DATA:



Western blot analysis of extracts of various cells, using SPINT1 antibody.



Immunohistochemistry of paraffin-embedded human prostate using SPINT1 antibody at dilution of 1:100 (40x lens).



Immunohistochemistry of paraffin-embedded mouse esophageal cancer using SPINT1 antibody at dilution of 1:100 (40x lens).

### Note:

For research use only, not for use in diagnostic procedure.

### Bioworld Technology, Inc.

Add: 1660 South Highway 100, Suite 500 St. Louis Park, MN 55416, USA.

Email: [info@bioworld.com](mailto:info@bioworld.com)

Tel: 6123263284

Fax: 6122933841

### Bioworld technology, co. Ltd.

Add: No 9, weidi road Qixia District Nanjing, 210046, P. R. China.

Email: [info@biogot.com](mailto:info@biogot.com)

Tel: 0086-025-68037686

Fax: 0086-025-68035151



## PRODUCT DATA SHEET

Bioworld Technology, Inc.

---

---

### **Bioworld Technology, Inc.**

**Add:** 1660 South Highway 100, Suite 500 St. Louis Park,  
MN 55416, USA.

**Email:** [info@bioworld.com](mailto:info@bioworld.com)

**Tel:** 6123263284

**Fax:** 6122933841

### **Bioworld technology, co. Ltd.**

**Add:** No 9, weidi road Qixia District Nanjing, 210046,  
P. R. China.

**Email:** [info@biogot.com](mailto:info@biogot.com)

**Tel:** 0086-025-68037686

**Fax:** 0086-025-68035151