

## UBE2V1 polyclonal antibody

Catalog: BS8126

Host: Rabbit

Reactivity: Human, Mouse, Rat

### BackGround:

Uev1A, also designated Uev1, UBE2V1 for Ubiquitin-conjugating enzyme E2 variant 1 and CROC1, shows sequence similarity to other ubiquitin-conjugating enzymes, but lacks the conserved cysteine residue critical for their catalytic activity. Therefore, Uev1A does not have ubiquitin-conjugating activity in vitro. However, constitutive expression of exogenous Uev1A in colon carcinoma cells inhibits their capacity to differentiate upon confluence. Studies on recombinant Uev1A show that it localizes to the nucleus, excluding the nucleolar regions. Uev1A functions with TRAF6, a RING domain protein, to catalyze the synthesis of unique polyubiquitin chains linked through lysine-63 of ubiquitin. The gene encoding Uev1A maps to human chromosome 20q13.2.

### Product:

Rabbit IgG, 1mg/ml in PBS with 0.02% sodium azide, 50% glycerol, pH7.2

### Molecular Weight:

~ 16 kDa

### Swiss-Prot:

Q13404

### Purification&Purity:

The antibody was affinity-purified from rabbit antiserum

by affinity-chromatography using epitope-specific immunogen and the purity is > 95% (by SDS-PAGE).

### Applications:

WB 1:500 - 1:2000

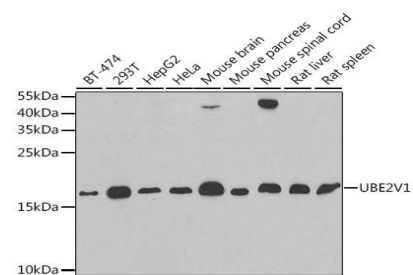
### Storage&Stability:

Store at 4 °C short term. Aliquot and store at -20 °C long term. Avoid freeze-thaw cycles.

### Specificity:

UBE2V1 polyclonal antibody detects endogenous levels of UBE2V1 protein.

### DATA:



WesternBlot (WB) analysis of UBE2V1 polyclonal antibody

### Note:

For research use only, not for use in diagnostic procedure.

### Bioworld Technology, Inc.

Add: 1660 South Highway 100, Suite 500 St. Louis Park, MN 55416, USA.

Email: [info@bioworld.com](mailto:info@bioworld.com)

Tel: 6123263284

Fax: 6122933841

### Bioworld technology, co. Ltd.

Add: No 9, weidi road Qixia District Nanjing, 210046, P. R. China.

Email: [info@biogot.com](mailto:info@biogot.com)

Tel: 0086-025-68037686

Fax: 0086-025-68035151