

## ANXA4 polyclonal antibody

Catalog: BS8098

Host: Rabbit

Reactivity: Human, Mouse, Rat

### BackGround:

The annexin family of calcium-binding proteins is composed of at least ten mammalian genes. It is characterized by a conserved core domain which binds to phospholipids in a Ca<sup>++</sup>-dependent manner and a unique amino terminal region which may confer binding specificity. Annexin family members have been implicated as regulators of such diverse processes as ion flux, endocytosis and exocytosis, and cellular adhesion. For example, the crystal structure of Annexin III has suggested a hydrophilic amino terminus with possible Ca<sup>++</sup> channel activity. Similarly, Annexin V has ion channel properties. Annexin IV, also referred to as endonexin, functions to regulate Cl<sup>-</sup> flux by mediating calmodulin kinase II (CaMKII) activity and Annexin V has been shown to regulate PKC activity.

### Product:

Rabbit IgG, 1mg/ml in PBS with 0.02% sodium azide, 50% glycerol, pH7.2

### Molecular Weight:

~ 36 kDa

### Swiss-Prot:

P09525

### Purification&Purity:

The antibody was affinity-purified from rabbit antiserum

by affinity-chromatography using epitope-specific immunogen and the purity is > 95% (by SDS-PAGE).

### Applications:

WB 1:500 - 1:2000

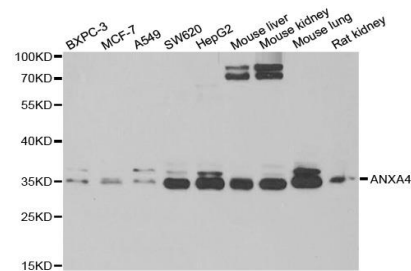
### Storage&Stability:

Store at 4 °C short term. Aliquot and store at -20 °C long term. Avoid freeze-thaw cycles.

### Specificity:

ANXA4 polyclonal antibody detects endogenous levels of ANXA4 protein.

### DATA:



WesternBlot (WB) analysis of ANXA4 polyclonal antibody

### Note:

For research use only, not for use in diagnostic procedure.

### Bioworld Technology, Inc.

Add: 1660 South Highway 100, Suite 500 St. Louis Park, MN 55416, USA.

Email: [info@bioworld.com](mailto:info@bioworld.com)

Tel: 6123263284

Fax: 6122933841

### Bioworld technology, co. Ltd.

Add: No 9, weidi road Qixia District Nanjing, 210046, P. R. China.

Email: [info@biogot.com](mailto:info@biogot.com)

Tel: 0086-025-68037686

Fax: 0086-025-68035151