

RHOT1 polyclonal antibody

Catalog: BS7892

Host: Rabbit

Reactivity: Human, Mouse, Rat

BackGround:

The Rho subfamily of Ras-related GTPases controls multiple aspects of cell function, including cytoskeletal rearrangement, nuclear signaling and cell growth. Rho T1 (ras homolog gene family, member T1), also known as ARHT1 or MIRO-1 (mitochondrial Rho GTPase 1), is an evolutionarily conserved member of the mitochondrial Rho GTPase family of proteins. Localizing to the mitochondrion, Rho T1 is widely expressed with predominant expression in skeletal muscle and heart. Rho T1 is a single-pass type IV membrane protein with two EF-hand domains and two GTPase domains (one at the N-terminus and one at the C-terminus). It is believed to play a role in the regulation of mitochondrial homeostasis and specifically binds to the kinesin-interacting proteins GRIF-1 and OIP106. Mutations in the gene encoding Rho T1 result in aggregation of the mitochondria. This suggests a potential role for Rho T1 in mitochondrial trafficking.

Product:

Rabbit IgG, 1mg/ml in PBS with 0.02% sodium azide, 50% glycerol, pH7.2

Molecular Weight:

~ 80 kDa

Swiss-Prot:

Q8IXI2

Purification&Purity:

The antibody was affinity-purified from rabbit antiserum by affinity-chromatography using epitope-specific immunogen and the purity is > 95% (by SDS-PAGE).

Applications:

WB: 1:500~1:2000

IHC: 1:50~1:200

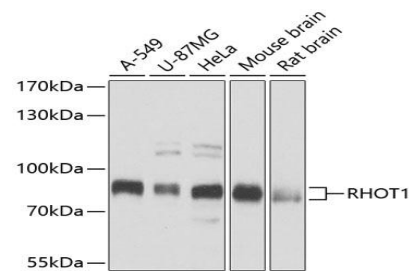
Storage&Stability:

Store at 4 °C short term. Aliquot and store at -20 °C long term. Avoid freeze-thaw cycles.

Specificity:

RHOT1 polyclonal antibody detects endogenous levels of RHOT1 protein.

DATA:



WesternBlot (WB) analysis of RHOT1 polyclonal antibody

Note:

For research use only, not for use in diagnostic procedure.

Bioworld Technology, Inc.

Add: 1660 South Highway 100, Suite 500 St. Louis Park, MN 55416, USA.

Email: info@bioworld.com

Tel: 6123263284

Fax: 6122933841

Bioworld technology, co. Ltd.

Add: No 9, weidi road Qixia District Nanjing, 210046, P. R. China.

Email: info@biogot.com

Tel: 0086-025-68037686

Fax: 0086-025-68035151