

SSH2 polyclonal antibody

Catalog: BS71400

Host: Rabbit

Reactivity: Human, Mouse, Rat

BackGround:

SSH2 (slingshot homolog 2) is a 1,423 amino acid protein that localizes to both the cytoplasm and the cytoskeleton and is a human homolog of the *Drosophila* slingshot (ssh) protein. Containing one tyrosine-protein phosphatase domain, SSH2 functions as a protein phosphatase that regulates Actin filament dynamics via the dephosphorylation of target proteins, such as Cofilin, which mediate Actin filament assembly and disassembly. Four isoforms of SSH2 exist due to alternative splicing events. The gene encoding SSH2 maps to human chromosome 17, which comprises over 2.5% of the human genome and encodes over 1,200 genes. Two key tumor suppressor genes are associated with chromosome 17, namely, p53 and BRCA1. Tumor suppressor p53 is necessary for maintenance of cellular genetic integrity by moderating cell fate through DNA repair versus cell death. Malfunction or loss of p53 expression is associated with malignant cell growth and Li-Fraumeni syndrome.

Product:

Rabbit IgG, 1mg/ml in PBS with 0.02% sodium azide, 50% glycerol, pH7.2

Molecular Weight:

~ 158 kDa

Swiss-Prot:

Q76I76

Purification&Purity:

The antibody was affinity-purified from rabbit antiserum by affinity-chromatography using epitope-specific immunogen and the purity is > 95% (by SDS-PAGE).

Applications:

WB 1:200 - 1:500

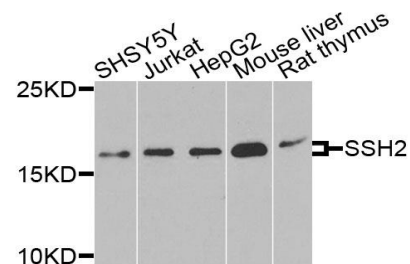
Storage&Stability:

Store at 4 °C short term. Aliquot and store at -20 °C long term. Avoid freeze-thaw cycles.

Specificity:

SSH2 polyclonal antibody detects endogenous levels of SSH2 protein.

DATA:



Western blot analysis of extracts of various cells, using SSH2 antibody.

Note:

For research use only, not for use in diagnostic procedure.

Bioworld Technology, Inc.

Add: 1660 South Highway 100, Suite 500 St. Louis Park, MN 55416, USA.

Email: info@bioworld.com

Tel: 6123263284

Fax: 6122933841

Bioworld technology, co. Ltd.

Add: No 9, weidi road Qixia District Nanjing, 210046, P. R. China.

Email: info@biogot.com

Tel: 0086-025-68037686

Fax: 0086-025-68035151