

ALOXE3 polyclonal antibody

Catalog: BS71134

Host: Rabbit

Reactivity: Human, Mouse, Rat

BackGround:

This gene is a member of the lipoxygenase family, which are catabolized by arachidonic acid-derived compounds. The encoded enzyme is a hydroperoxide isomerase that synthesizes a unique type of epoxy alcohol (8R-hydroxy-11R,12R-epoxyeicosa-5Z,9E,14Z-trienoic acid) from 12R-hydroperoxyeicosatetraenoic acid (12R-HPETE). This epoxy alcohol can activate the nuclear receptor peroxisome proliferator-activated receptor alpha (PPARalpha), which is implicated in epidermal differentiation. Loss of function of the enzyme encoded by this gene results in ichthyosis, implicating the function of this gene in the differentiation of human skin. This gene is part of a cluster of lipoxygenase genes on 17p13.1. Mutations in this gene result in nonbullous congenital ichthyosiform erythroderma (NCIE). Multiple transcript variants encoding different isoforms have been found for this gene.

Product:

Rabbit IgG, 1mg/ml in PBS with 0.02% sodium azide, 50% glycerol, pH7.2

Molecular Weight:

~ 81 kDa

Swiss-Prot:

Q9BYJ1

Purification&Purity:

The antibody was affinity-purified from rabbit antiserum by affinity-chromatography using epitope-specific immunogen and the purity is > 95% (by SDS-PAGE).

Applications:

WB: 1:500~1:2000

IF: 1:50~1:200

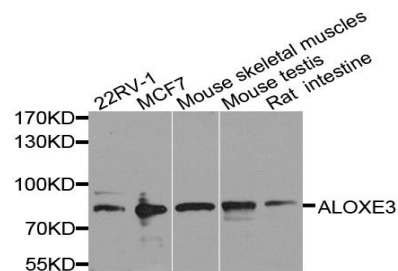
Storage&Stability:

Store at 4 °C short term. Aliquot and store at -20 °C long term. Avoid freeze-thaw cycles.

Specificity:

ALOXE3 polyclonal antibody detects endogenous levels of ALOXE3 protein.

DATA:



Western blot analysis of extract of various cells, using ALOXE3 antibody.

Note:

For research use only, not for use in diagnostic procedure.

Bioworld Technology, Inc.

Add: 1660 South Highway 100, Suite 500 St. Louis Park, MN 55416, USA.

Email: info@bioworld.com

Tel: 6123263284

Fax: 6122933841

Bioworld technology, co. Ltd.

Add: No 9, weidi road Qixia District Nanjing, 210046, P. R. China.

Email: info@biogot.com

Tel: 0086-025-68037686

Fax: 0086-025-68035151