

AMY2A polyclonal antibody

Catalog: BS71059

Host: Rabbit

Reactivity: Human, Mouse, Rat

BackGround:

This gene encodes a member of the alpha-amylase family of proteins. Amylases are secreted proteins that hydrolyze 1,4-alpha-glucoside bonds in oligosaccharides and polysaccharides, catalyzing the first step in digestion of dietary starch and glycogen. This gene and several family members are present in a gene cluster on chromosome 1. This gene encodes an amylase isoenzyme produced by the pancreas.

Product:

Rabbit IgG, 1mg/ml in PBS with 0.02% sodium azide, 50% glycerol, pH7.2

Molecular Weight:

~ 58 kDa

Swiss-Prot:

P04746

Purification&Purity:

The antibody was affinity-purified from rabbit antiserum by affinity-chromatography using epitope-specific immunogen and the purity is > 95% (by SDS-PAGE).

Applications:

WB 1:500 - 1:2000

IHC 1:50 - 1:200

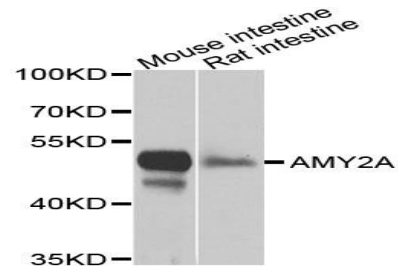
Storage&Stability:

Store at 4 °C short term. Aliquot and store at -20 °C long term. Avoid freeze-thaw cycles.

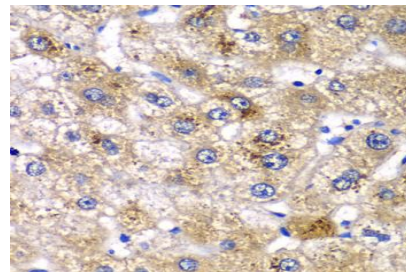
Specificity:

AMY2A polyclonal antibody detects endogenous levels of AMY2A protein.

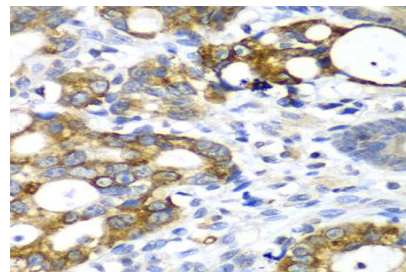
DATA:



Western blot analysis of extracts of various cells, using AMY2A antibody.



Immunohistochemistry of paraffin-embedded human liver injury using AMY2A antibody at dilution of 1:100 (x40 lens).



Immunohistochemistry of paraffin-embedded human gastric cancer using AMY2A antibody at dilution of 1:100 (x40 lens).

Note:

For research use only, not for use in diagnostic procedure.

Bioworld Technology, Inc.

Add: 1660 South Highway 100, Suite 500 St. Louis Park, MN 55416, USA.

Email: info@bioworld.com

Tel: 6123263284

Fax: 6122933841

Bioworld technology, co. Ltd.

Add: No 9, weidi road Qixia District Nanjing, 210046, P. R. China.

Email: info@biogot.com

Tel: 0086-025-68037686

Fax: 0086-025-68035151