

SPICE1 polyclonal antibody

Catalog: BS70960

Host: Rabbit

Reactivity: Human, Mouse, Rat

BackGround:

Spindle and centriole-associated protein 1, regulator required for centriole duplication, for proper bipolar spindle formation and chromosome congression in mitosis.

Product:

Rabbit IgG, 1mg/ml in PBS with 0.02% sodium azide, 50% glycerol, pH7.2

Molecular Weight:

~ 120 kDa

Swiss-Prot:

Q8N0Z3

Purification&Purity:

The antibody was affinity-purified from rabbit antiserum by affinity-chromatography using epitope-specific immunogen and the purity is > 95% (by SDS-PAGE).

Applications:

WB: 1:500~1:2000

IHC: 1:50~1:200

IF: 1:50~1:200

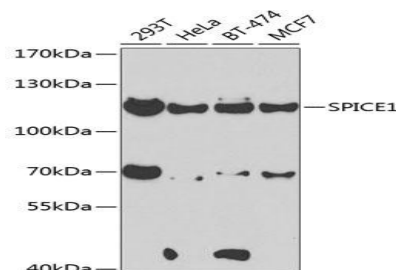
Storage&Stability:

Store at 4 °C short term. Aliquot and store at -20 °C long term. Avoid freeze-thaw cycles.

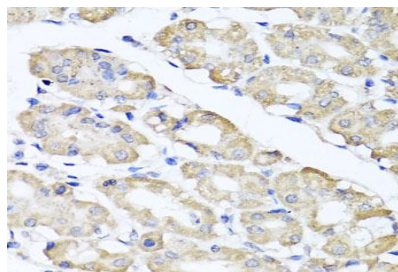
Specificity:

SPICE1 polyclonal antibody detects endogenous levels of SPICE1 protein.

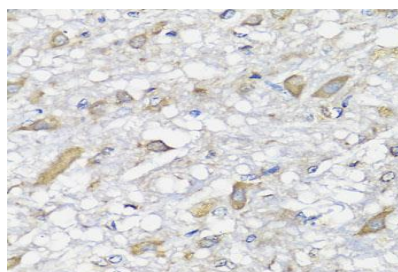
DATA:



Western blot analysis of extracts of various cells, using SPICE1 antibody.



Immunohistochemistry of paraffin-embedded human gastric using SPICE1 antibody at dilution of 1:100 (x40 lens).



Immunohistochemistry of paraffin-embedded rat brain using SPICE1 antibody at dilution of 1:100 (x40 lens).

Note:

For research use only, not for use in diagnostic procedure.

Bioworld Technology, Inc.

Add: 1660 South Highway 100, Suite 500 St. Louis Park, MN 55416, USA.

Email: info@bioworld.com

Tel: 6123263284

Fax: 6122933841

Bioworld technology, co. Ltd.

Add: No 9, weidi road Qixia District Nanjing, 210046, P. R. China.

Email: info@biogot.com

Tel: 0086-025-68037686

Fax: 0086-025-68035151