

SUCLA2 polyclonal antibody

Catalog: BS70936

Host: Rabbit

Reactivity: Human, Mouse, Rat

BackGround:

SUCLA2 (succinate-CoA ligase, ADP-forming, beta subunit), also known as A-BETA, SCS-betaA or renal carcinoma antigen NY-REN-39, is a 463 amino acid mitochondrial matrix enzyme that belongs to the succinate/malate CoA ligase beta subunit family. Widely expressed, SUCLA2 dimerizes with the SCS alpha subunit to form SCS-A, an essential component of the tricarboxylic acid cycle. Defects in SUCLA2 may be involved in a group of autosomal recessive disorders known as Mitochondrial DNA depletion syndromes (MDSs) that are characterized by a decrease in mitochondrial DNA copy numbers in affected tissues.

Product:

Rabbit IgG, 1mg/ml in PBS with 0.02% sodium azide, 50% glycerol, pH7.2

Molecular Weight:

~ 50 kDa

Swiss-Prot:

Q9P2R7

Purification&Purity:

The antibody was affinity-purified from rabbit antiserum by affinity-chromatography using epitope-specific immunogen and the purity is > 95% (by SDS-PAGE).

Applications:

WB 1:500 - 1:1000

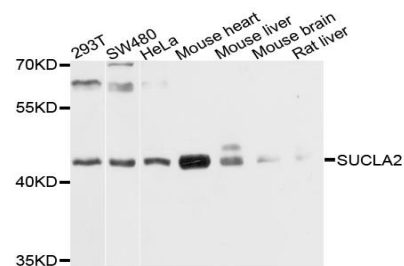
Storage&Stability:

Store at 4 °C short term. Aliquot and store at -20 °C long term. Avoid freeze-thaw cycles.

Specificity:

SUCLA2 polyclonal antibody detects endogenous levels of SUCLA2 protein.

DATA:



Western blot analysis of extracts of various cells, using SUCLA2 antibody.

Note:

For research use only, not for use in diagnostic procedure.

Bioworld Technology, Inc.

Add: 1660 South Highway 100, Suite 500 St. Louis Park, MN 55416, USA.

Email: info@bioworld.com

Tel: 6123263284

Fax: 6122933841

Bioworld technology, co. Ltd.

Add: No 9, weidi road Qixia District Nanjing, 210046, P. R. China.

Email: info@biogot.com

Tel: 0086-025-68037686

Fax: 0086-025-68035151